

DATASHEET

CD31 Mouse Monoclonal Antibody (ARM861)

CAT. NO. ARM6651

KEY FEATURES

Target	CD31	Clone ID	ARM861
Source / Host	Mouse	Reactivity	Human
Applications	IHC	Dilution	1:100-1:200
Clonality	Monoclonal	Storage	-20°C

BACKGROUND

Cluster of Differentiation 31 (CD31) is present on hematopoietic stem cells (HSCs), and its expression is used to determine the concentration of HSCs in research studies and for bone marrow transplantation. Anti-CD31 is very specific and sensitive for endothelial cells and does not stain non-vascular tumours, therefore CD31 staining is used to recognize the vascular origins of neoplasms.

APPLICATION

To ensure optimal assay performance, AREX recommends conducting reagent titration tailored to each testing system for optimal detection results.

Application	IHC
Dilution Ratio	1:100-1:200

*Results are sample-specific. Please refer to your local assay conditions and test parameters for reference.

PRODUCT OVERVIEW

Antibody Type	Primary antibodies
Isotype	IgG1
Positive Control	Tonsil
Localization	Cytoplasmic, Membranous
Form / Buffer	Tris Buffer, pH 7.3 - 7.7, with 1% BSA and <0.1% Sodium Azide
Purification	Purified
Conjugation	Unconjugated
Gene Symbol	PECAM1
Entrez Gene ID	5175
Uniprot	P16284
Alternative Names	Platelet endothelial cell adhesion molecule; PECAM-1; EndoCAM; GPIIA; PECA1; CD31

*AREX continuously optimizes our products. Webpage content may not reflect the latest updates. For inquiries, please contact info@arexbio.com or your local distributor.

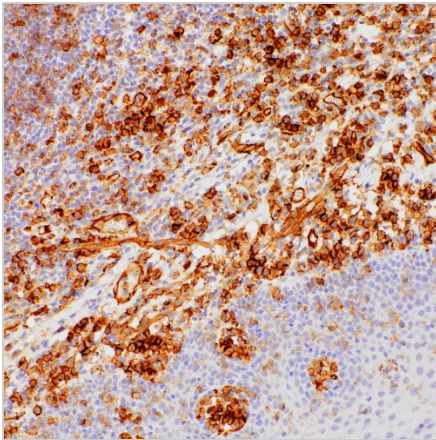
*Clone Number, Reactivity, Source/Host and Clonality can be found in the product name and Key Features section above.

DATASHEET**CD31 Mouse Monoclonal Antibody (ARM861)**

CAT. NO. ARM6651

STORAGE

Store at 4°C short term. For long term storage, store at -20°C, avoiding freeze/thaw cycles.

DATA

Immunohistochemical staining of human tonsil tissue using CD31 Mouse Monoclonal Antibody (ARM861)

RESEARCH USE ONLY

For Research Use Only. Not for diagnostic, therapeutics, prophylactic or in vivo use.

More information: [www.arexbio.com / cd31-mouse-monoclonal-antibody-arm861-arm6651](http://www.arexbio.com/cd31-mouse-monoclonal-antibody-arm861-arm6651)