

DATASHEET

PAX-8 Rabbit Monoclonal Antibody (ARM863)

CAT. NO. ARM6653

KEY FEATURES

Target	PAX-8	Clone ID	ARM863
Source / Host	Rabbit	Reactivity	Human
Applications	IHC	Dilution	1:100-1:200
Clonality	Monoclonal	Storage	-20°C

BACKGROUND

PAX-8 is a transcription factor expressed during embryonic development of Müllerian organs, kidney, and thyroid, with continued expression in some epithelial cell types of these mature tissues. It can be useful for marking several types of carcinoma including ovarian serous carcinoma, clear cell renal cell carcinoma, and papillary thyroid carcinoma. Additionally, PAX-8 is not found in the epithelial cells of the breast, lung, mesothelium, stomach, colon, pancreas and other sites.

APPLICATION

To ensure optimal assay performance, AREX recommends conducting reagent titration tailored to each testing system for optimal detection results.

Application	IHC
Dilution Ratio	1:100-1:200

*Results are sample-specific. Please refer to your local assay conditions and test parameters for reference.

PRODUCT OVERVIEW

Antibody Type	Primary antibodies
Isotype	IgG
Positive Control	Ovarian Carcinoma (Non-Mucinous Carcinoma), Thyroid Carcinoma, Renal Cell Carcinoma
Localization	Nuclear
Form / Buffer	Tris Buffer, pH 7.3 - 7.7, with 1% BSA and <0.1% Sodium Azide
Purification	Purified
Conjugation	Unconjugated
Gene Symbol	PAX8
Entrez Gene ID	7849
Uniprot	Q06710
Alternative Names	Paired box protein Pax-8

*AREX continuously optimizes our products. Webpage content may not reflect the latest updates. For inquiries, please contact info@arexbio.com or your local distributor.

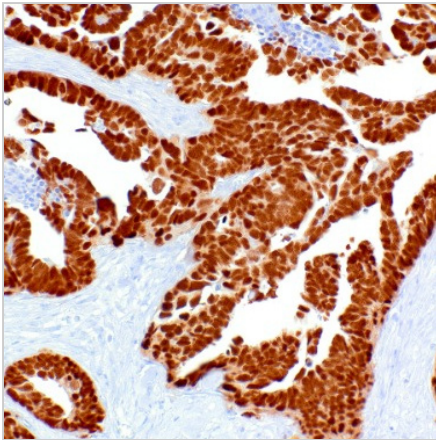
*Clone Number, Reactivity, Source/Host and Clonality can be found in the product name and Key Features section above.

DATASHEET**PAX-8 Rabbit Monoclonal Antibody (ARM863)**

CAT. NO. ARM6653

STORAGE

Store at 4°C short term. For long term storage, store at -20°C, avoiding freeze/thaw cycles.

DATA

Immunohistochemical staining of human ovarian cancer tissue using PAX-8 Rabbit Monoclonal Antibody (ARM863)

RESEARCH USE ONLY

For Research Use Only. Not for diagnostic, therapeutics, prophylactic or in vivo use.

More information: [www.arexbio.com / pax-8-mouse-monoclonal-antibody-arm863-arm6653](http://www.arexbio.com/pax-8-mouse-monoclonal-antibody-arm863-arm6653)