

DATASHEET

Cytokeratin (AE1/AE3) Mouse Monoclonal Antibody (ARM864)

CAT. NO. ARM6654

KEY FEATURES

Target	Cytokeratin (AE1/AE3)	Clone ID	ARM864
Source / Host	Mouse	Reactivity	Human
Applications	IHC	Dilution	1:100-1:200
Clonality	Monoclonal	Storage	-20°C

BACKGROUND

Cytokeratin [AE1/AE3] antibody is a monoclonal antibody cocktails composed of clone AE1 and AE3, which recognize the Type I and Type II (Acidic and basic) cytokeratin subfamilies. The acidic cytokeratins includes molecular weights of 56.5, 55, 51, 50, 50, 48, 46, 45 and 40 kDa, while the basic cytokeratins have molecular weights of 65-67, 64, 59, 58, 56 and 52 kDa. In pathology laboratories, this Cytokeratin (AE1/AE3) antibody is used as a screener for the majority of human carcinomas.

APPLICATION

To ensure optimal assay performance, AREX recommends conducting reagent titration tailored to each testing system for optimal detection results.

Application	IHC
Dilution Ratio	1:100-1:200

*Results are sample-specific. Please refer to your local assay conditions and test parameters for reference.

PRODUCT OVERVIEW

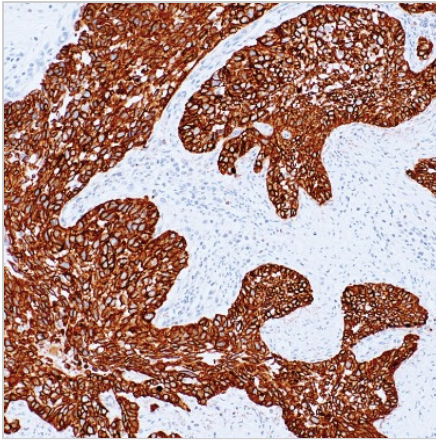
Antibody Type	Primary antibodies
Isotype	IgG1
Positive Control	Colon Adenocarcinoma, Skin, Lung Squamous Cell Carcinoma
Localization	Cytoplasmic
Form / Buffer	Tris Buffer, pH 7.3 - 7.7, with 1% BSA and <0.1% Sodium Azide
Purification	Purified
Conjugation	Unconjugated
Gene Symbol	KRT family
Entrez Gene ID	Multiple (Cocktail)
Uniprot	Multiple
Alternative Names	Acidic & Basic Cytokeratins (Cocktail)

*AREX continuously optimizes our products. Webpage content may not reflect the latest updates. For inquiries, please contact info@arexbio.com or your local distributor.

*Clone Number, Reactivity, Source/Host and Clonality can be found in the product name and Key Features section above.

DATASHEET**Cytokeratin (AE1/AE3) Mouse Monoclonal Antibody (ARM864)****CAT. NO. ARM6654****| STORAGE**

Store at 4°C short term. For long term storage, store at -20°C, avoiding freeze/thaw cycles.

| DATA

Immunohistochemical staining of human lung squamous cell carcinoma tissue sections using Cytokeratin (AE1/AE3) Mouse Monoclonal Antibody (ARM864).

| RESEARCH USE ONLY

For Research Use Only. Not for diagnostic, therapeutics, prophylactic or in vivo use.

More information: [www.arexbio.com / cytokeratin-\(ae1-ae3\)-mouse-monoclonal-antibody-arm864-arm6654](http://www.arexbio.com/cytokeratin-(ae1-ae3)-mouse-monoclonal-antibody-arm864-arm6654)