

DATASHEET

CD56 Rabbit Monoclonal Antibody (ARM867)

CAT. NO. ARM6657

KEY FEATURES

Target	CD56	Clone ID	ARM867
Source / Host	Rabbit	Reactivity	Human
Applications	IHC	Dilution	1:100-1:200
Clonality	Monoclonal	Storage	-20°C

BACKGROUND

Cluster of Differentiation 56 (CD56), also known as Neural-Cell Adhesion Molecule (NCAM), is a glycoprotein involved in synaptic plasticity, cell-cell adhesion, neurite outgrowth, learning, and memory. NCAM is expressed in normal neurons, glia, natural killer cells, activated T-cells, brain and cerebellum, neuroendocrine tissues, and skeletal muscle. Anti-CD56 recognizes a number of tumours including myeloma, myeloid leukemia, natural killer/T-cell lymphomas, neuroendocrine tumours, pancreatic acinar-cell carcinoma, pheochromocytoma, and Wilm's tumour. CD56 is detectable in neoplasms that are neuroectodermally-derived, such as retinoblastoma, medulloblastomas, astrocytomas, small cell carcinomas, and neuroblastomas. It has also been linked to rhabdomyosarcoma, a tumour that is mesodermally-derived.

APPLICATION

To ensure optimal assay performance, AREX recommends conducting reagent titration tailored to each testing system for optimal detection results.

Application	IHC
Dilution Ratio	1:100-1:200

*Results are sample-specific. Please refer to your local assay conditions and test parameters for reference.

PRODUCT OVERVIEW

Antibody Type	Primary antibodies
Isotype	IgG
Positive Control	Neuroblastoma, SCLC
Localization	Cytoplasmic, Membranous
Form / Buffer	Tris Buffer, pH 7.3 - 7.7, with 1% BSA and <0.1% Sodium Azide
Purification	Purified
Conjugation	Unconjugated
Gene Symbol	NCAM1
Entrez Gene ID	4684
Uniprot	P13591
Alternative Names	NCAM; Neural cell adhesion molecule 1; N-CAM-1; NCAM-1; CD56

*AREX continuously optimizes our products. Webpage content may not reflect the latest updates. For inquiries, please contact info@arexbio.com or your local distributor.

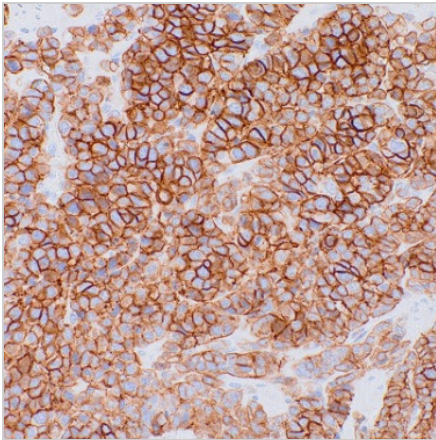
*Clone Number, Reactivity, Source/Host and Clonality can be found in the product name and Key Features section above.

DATASHEET**CD56 Rabbit Monoclonal Antibody (ARM867)**

CAT. NO. ARM6657

STORAGE

Store at 4°C short term. For long term storage, store at -20°C, avoiding freeze/thaw cycles.

DATA

Immunohistochemical staining of human small cell lung cancer tissue sections using CD56 Rabbit Monoclonal Antibody (ARM867).

RESEARCH USE ONLY

For Research Use Only. Not for diagnostic, therapeutics, prophylactic or in vivo use.

More information: [www.arexbio.com / cd56-mouse-monoclonal-antibody-arm867-arm6657](http://www.arexbio.com/cd56-mouse-monoclonal-antibody-arm867-arm6657)