

DATASHEET

Myosin, Smooth Muscle Mouse Monoclonal Antibody (ARM868)

CAT. NO. ARM6658

KEY FEATURES

Target	Myosin, Smooth Muscle	Clone ID	ARM868
Source / Host	Mouse	Reactivity	Human
Applications	IHC	Dilution	1:100-1:200
Clonality	Monoclonal	Storage	-20°C

BACKGROUND

Smooth Muscle-Myosin is a major component of smooth muscle contractile apparatus. IHC detection of Myosin, Smooth Muscle visualizes the myoepithelial cell present in both normal and in situ malignant breast and bronchioloalveolar lesions and serves a valuable biomarker to distinguish between benign and malignant tumors.

APPLICATION

To ensure optimal assay performance, AREX recommends conducting reagent titration tailored to each testing system for optimal detection results.

Application	IHC
Dilution Ratio	1:100-1:200

*Results are sample-specific. Please refer to your local assay conditions and test parameters for reference.

PRODUCT OVERVIEW

Antibody Type	Primary antibodies
Isotype	IgG1
Positive Control	Breast, Colon tissues
Localization	Cytoplasmic
Form / Buffer	Tris Buffer, pH 7.3 - 7.7, with 1% BSA and <0.1% Sodium Azide
Purification	Purified
Conjugation	Unconjugated
Gene Symbol	MYH11
Entrez Gene ID	4629
Uniprot	P35749
Alternative Names	SM-MHC, SMMHC

*AREX continuously optimizes our products. Webpage content may not reflect the latest updates. For inquiries, please contact info@arexbio.com or your local distributor.

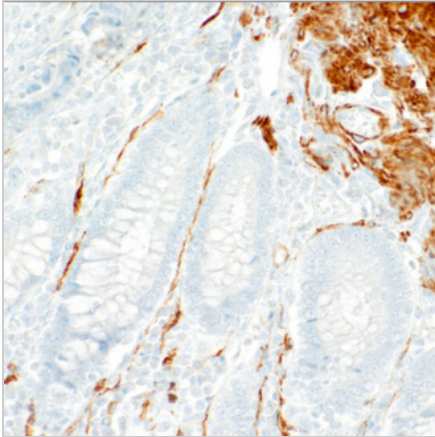
*Clone Number, Reactivity, Source/Host and Clonality can be found in the product name and Key Features section above.

DATASHEET**Myosin, Smooth Muscle Mouse Monoclonal Antibody (ARM868)**

CAT. NO. ARM6658

STORAGE

Store at 4°C short term. For long term storage, store at -20°C, avoiding freeze/thaw cycles.

DATA

Immunohistochemical staining of human colon tissue using Myosin, Smooth Muscle Mouse Monoclonal Antibody (ARM868).

RESEARCH USE ONLY

For Research Use Only. Not for diagnostic, therapeutics, prophylactic or in vivo use.

More information: [www.arexbio.com / myosin-smooth-muscle-mouse-monoclonal-antibody-arm868-arm6658](http://www.arexbio.com/myosin-smooth-muscle-mouse-monoclonal-antibody-arm868-arm6658)