

DATASHEET

PRAME Rabbit Monoclonal Antibody (ARM869)

CAT. NO. ARM6659

KEY FEATURES

Target	PRAME	Clone ID	ARM869
Source / Host	Rabbit	Reactivity	Human
Applications	IHC	Dilution	1:100-1:200
Clonality	Monoclonal	Storage	-20°C

BACKGROUND

PRAME (preferentially expressed antigen in melanoma) expression was reported in melanoma, nonsmall cell lung cancer, breast carcinoma, renal cell carcinoma, etc. Normal healthy tissues do not express PRAME except for testis, ovary, placenta, adrenals, and endometrium.

APPLICATION

To ensure optimal assay performance, AREX recommends conducting reagent titration tailored to each testing system for optimal detection results.

Application	IHC
Dilution Ratio	1:100-1:200

*Results are sample-specific. Please refer to your local assay conditions and test parameters for reference.

PRODUCT OVERVIEW

Antibody Type	Primary antibodies
Isotype	IgG
Positive Control	Melanoma
Localization	Nuclear
Form / Buffer	Tris Buffer, pH 7.3 - 7.7, with 1% BSA and <0.1% Sodium Azide
Purification	Purified
Conjugation	Unconjugated
Gene Symbol	PRAME
Entrez Gene ID	23532
Uniprot	P78395
Alternative Names	MAPE; OIP4; Melanoma antigen preferentially expressed in tumors; Opa-interacting protein 4; OIP-4; Preferentially expressed antigen of melanoma

*AREX continuously optimizes our products. Webpage content may not reflect the latest updates. For inquiries, please contact info@arexbio.com or your local distributor.

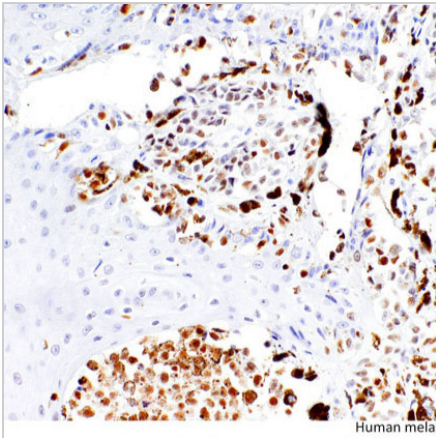
*Clone Number, Reactivity, Source/Host and Clonality can be found in the product name and Key Features section above.

DATASHEET**PRAME Rabbit Monoclonal Antibody (ARM869)**

CAT. NO. ARM6659

STORAGE

Store at 4°C short term. For long term storage, store at -20°C, avoiding freeze/thaw cycles.

DATA

Immunohistochemical staining of human melanoma tissue using PRAME Rabbit Monoclonal Antibody (ARM869)

RESEARCH USE ONLY

For Research Use Only. Not for diagnostic, therapeutics, prophylactic or in vivo use.

More information: www.arexbio.com/prame-mouse-monoclonal-antibody-arm869-arm6659