

DATASHEET

CD30 Mouse Monoclonal Antibody (ARM872)

CAT. NO. ARM6662

KEY FEATURES

Target	CD30	Clone ID	ARM872
Source / Host	Mouse	Reactivity	Human
Applications	IHC	Dilution	1:100-1:200
Clonality	Monoclonal	Storage	-20°C

BACKGROUND

Cluster of Differentiation 30 (CD30) is a transmembrane cytokine receptor expressed by activated T- and B- cells. It is present on Reed-Sternberg cells in Hodgkin's lymphoma, most anaplastic large cell lymphomas, embryonal carcinomas, and primary cutaneous CD30 positive T-cell lymphoproliferative disorders. B-cell lymphomas are sometimes stained by Anti-CD30. Lymphomas exhibit Golgi zone accentuation when stained with Anti-CD30, while embryonal carcinomas produce membranous stains.

APPLICATION

To ensure optimal assay performance, AREX recommends conducting reagent titration tailored to each testing system for optimal detection results.

Application	IHC
Dilution Ratio	1:100-1:200

*Results are sample-specific. Please refer to your local assay conditions and test parameters for reference.

PRODUCT OVERVIEW

Antibody Type	Primary antibodies
Isotype	IgG1
Positive Control	Classic Hodgkin Lymphoma, Lymphoma
Localization	Cytoplasmic, Membranous
Form / Buffer	Tris Buffer, pH 7.3 - 7.7, with 1% BSA and <0.1% Sodium Azide
Purification	Purified
Conjugation	Unconjugated
Gene Symbol	TNFRSF8
Entrez Gene ID	943
Uniprot	P28908
Alternative Names	CD30; D1S166E; Tumor necrosis factor receptor superfamily member 8; CD30L receptor; Ki-1 antigen; Lymphocyte activation antigen CD30; CD30

*AREX continuously optimizes our products. Webpage content may not reflect the latest updates. For inquiries, please contact info@arexbio.com or your local distributor.

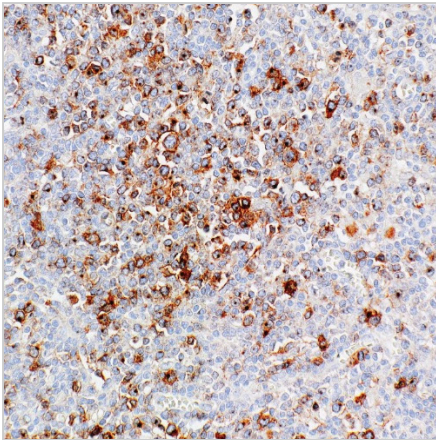
*Clone Number, Reactivity, Source/Host and Clonality can be found in the product name and Key Features section above.

DATASHEET**CD30 Mouse Monoclonal Antibody (ARM872)**

CAT. NO. ARM6662

STORAGE

Store at 4°C short term. For long term storage, store at -20°C, avoiding freeze/thaw cycles.

DATA

Immunohistochemical staining of human classic Hodgkin lymphoma tissue using CD30 Mouse Monoclonal Antibody (ARM872)

RESEARCH USE ONLY

For Research Use Only. Not for diagnostic, therapeutics, prophylactic or in vivo use.

More information: [www.arexbio.com / cd30-mouse-monoclonal-antibody-arm872-arm6662](http://www.arexbio.com/cd30-mouse-monoclonal-antibody-arm872-arm6662)