

## DATASHEET

# TTF-1 Rabbit Monoclonal Antibody (ARM875)

CAT. NO. ARM6665

### KEY FEATURES

Target	TTF-1	Clone ID	ARM875
Source / Host	Rabbit	Reactivity	Human
Applications	IHC	Dilution	1:100-1:200
Clonality	Monoclonal	Storage	-20°C

### BACKGROUND

Thyroid Transcription Factor 1 (TTF-1) is present in diencephalon, lung, and thyroid. Anti-TTF-1 stains thyroid and thyroid-derived tumours, and is therefore used for distinguishing lung adenocarcinoma from germ cell tumours, malignant mesothelioma, and metastatic carcinomas from organs other than the thyroid. It is also useful for distinguishing small cell lung carcinoma from lymphoid infiltrates, and pulmonary from non-pulmonary adenocarcinomas in malignant effusions. The ability to distinguish between pulmonary and non-pulmonary adenocarcinomas is particularly useful in identifying tumours that have metastasized to the brain.

### APPLICATION

To ensure optimal assay performance, AREX recommends conducting reagent titration tailored to each testing system for optimal detection results.

Application	IHC
Dilution Ratio	1:100-1:200

\*Results are sample-specific. Please refer to your local assay conditions and test parameters for reference.

### PRODUCT OVERVIEW

Antibody Type	Primary antibodies
Isotype	IgG
Positive Control	Lung Adenocarcinoma
Localization	Nuclear
Form / Buffer	Tris Buffer, pH 7.3 - 7.7, with 1% BSA and <0.1% Sodium Azide
Purification	Purified
Conjugation	Unconjugated
Gene Symbol	NKX2-1
Entrez Gene ID	7080
Uniprot	P43699
Alternative Names	Thyroid transcription factor 1, NKX2-1

\*AREX continuously optimizes our products. Webpage content may not reflect the latest updates. For inquiries, please contact [info@arexbio.com](mailto:info@arexbio.com) or your local distributor.

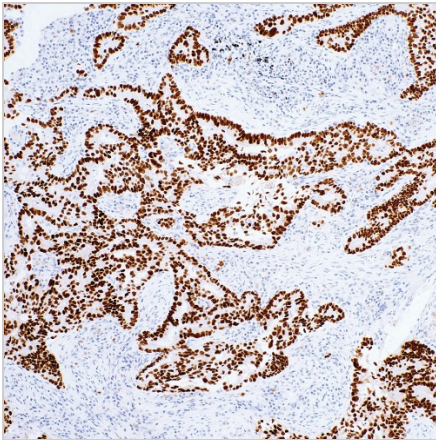
\*Clone Number, Reactivity, Source/Host and Clonality can be found in the product name and Key Features section above.

**DATASHEET****TTF-1 Rabbit Monoclonal Antibody (ARM875)**

CAT. NO. ARM6665

**STORAGE**

Store at 4°C short term. For long term storage, store at -20°C, avoiding freeze/thaw cycles.

**DATA**

Immunohistochemical staining of human lung adenocarcinoma tissue using TTF-1 Rabbit Monoclonal Antibody (ARM875)

**RESEARCH USE ONLY**

For Research Use Only. Not for diagnostic, therapeutics, prophylactic or in vivo use.

More information: [www.arexbio.com / ttf-1-mouse-monoclonal-antibody-arm875-arm6665](http://www.arexbio.com/ttf-1-mouse-monoclonal-antibody-arm875-arm6665)