

**DATASHEET**

**Helicobacter pylori Rabbit Monoclonal Antibody (ARM881)**

CAT. NO. ARM6671

**KEY FEATURES**

Target	Helicobacter pylori	Clone ID	ARM881
Source / Host	Rabbit	Reactivity	Human
Applications	IHC	Dilution	1:100-1:200
Clonality	Monoclonal	Storage	-20°C

**BACKGROUND**

Helicobacter pylori are spiral-shaped, gram-negative bacteria that inhabit the mucosal lining of the gastric epithelium. Infection with H. pylori is strongly associated with many gastroduodenal diseases, including intestinal-type carcinomas, peptic and gastric ulcers, and chronic gastritis. There is evidence linking these bacteria to gastric and mucosa-associated lymphoid tissue lymphomas, and H. pylori has also been indicated as a risk factor for colorectal polyps in children.

**APPLICATION**

To ensure optimal assay performance, AREX recommends conducting reagent titration tailored to each testing system for optimal detection results.

Application	IHC
Dilution Ratio	1:100-1:200

\*Results are sample-specific. Please refer to your local assay conditions and test parameters for reference.

**PRODUCT OVERVIEW**

Antibody Type	Primary antibodies
Isotype	IgG
Positive Control	H. pylori infected stomach tissue
Localization	Spiral shaped bacterium
Form / Buffer	Tris Buffer, pH 7.3 - 7.7, with 1% BSA and <0.1% Sodium Azide
Purification	Purified
Conjugation	Unconjugated
Gene Symbol	N/A
Entrez Gene ID	N/A
Uniprot	N/A
Alternative Names	H. pylori (Bacterial antigen)

\*AREX continuously optimizes our products. Webpage content may not reflect the latest updates. For inquiries, please contact [info@arexbio.com](mailto:info@arexbio.com) or your local distributor.

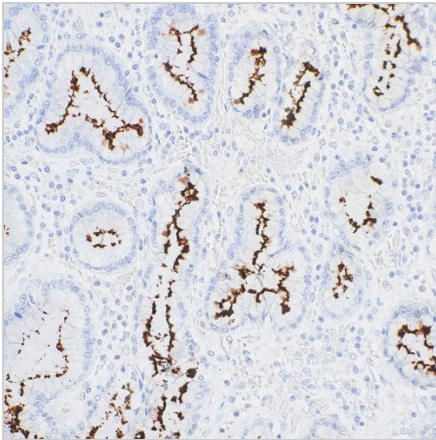
\*Clone Number, Reactivity, Source/Host and Clonality can be found in the product name and Key Features section above.

**DATASHEET****Helicobacter pylori Rabbit Monoclonal Antibody (ARM881)**

CAT. NO. ARM6671

**STORAGE**

Store at 4°C short term. For long term storage, store at -20°C, avoiding freeze/thaw cycles.

**DATA**

Immunohistochemistry (Formalin/PFA-fixed paraffin-embedded sections) analysis of human stomach sections labeling *Helicobacter pylori* with ARM881.

**RESEARCH USE ONLY**

For Research Use Only. Not for diagnostic, therapeutics, prophylactic or in vivo use.

More information: [www.arexbio.com/helicobacter-pylori-mouse-monoclonal-antibody-arm881-arm6671](http://www.arexbio.com/helicobacter-pylori-mouse-monoclonal-antibody-arm881-arm6671)