

**DATASHEET**

**Estrogen Receptor Rabbit Monoclonal Antibody (ARM883)**

**CAT. NO. ARM6673**

**KEY FEATURES**

Target	Estrogen Receptor	Clone ID	ARM883
Source / Host	Rabbit	Reactivity	Human
Applications	IHC	Dilution	1:100-1:200
Clonality	Monoclonal	Storage	-20°C

**BACKGROUND**

Estrogen Receptors (ER) are a group of nuclear hormone receptors activated by the hormone estrogen. ER is found in normal epithelial cells of the breast and endometrium, as well as in breast cancer cells.

**APPLICATION**

To ensure optimal assay performance, AREX recommends conducting reagent titration tailored to each testing system for optimal detection results.

Application	IHC
Dilution Ratio	1:100-1:200

\*Results are sample-specific. Please refer to your local assay conditions and test parameters for reference.

**PRODUCT OVERVIEW**

Antibody Type	Primary antibodies
Isotype	IgG, kappa (Rab)
Positive Control	Breast Carcinoma
Localization	Nuclear
Form / Buffer	Tris Buffer, pH 7.3 - 7.7, with 1% BSA and <0.1% Sodium Azide
Purification	Purified
Conjugation	Unconjugated
Gene Symbol	ESR1
Entrez Gene ID	2099
Uniprot	P03372
Alternative Names	ER, ER-alpha

\*AREX continuously optimizes our products. Webpage content may not reflect the latest updates. For inquiries, please contact [info@arexbio.com](mailto:info@arexbio.com) or your local distributor.

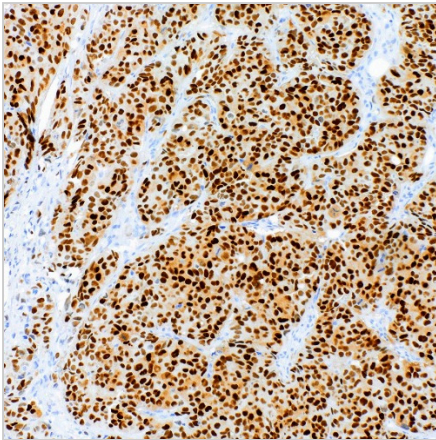
\*Clone Number, Reactivity, Source/Host and Clonality can be found in the product name and Key Features section above.

**DATASHEET****Estrogen Receptor Rabbit Monoclonal Antibody (ARM883)**

CAT. NO. ARM6673

**STORAGE**

Store at 4°C short term. For long term storage, store at -20°C, avoiding freeze/thaw cycles.

**DATA**

Immunohistochemical staining of human breast tissue using Estrogen Receptor Rabbit Monoclonal Antibody (ARM883)

**RESEARCH USE ONLY**

For Research Use Only. Not for diagnostic, therapeutics, prophylactic or in vivo use.

More information: [www.arexbio.com/estrogen-receptor-mouse-monoclonal-antibody-arm883-arm6673](http://www.arexbio.com/estrogen-receptor-mouse-monoclonal-antibody-arm883-arm6673)