

DATASHEET

Calcitonin Rabbit Monoclonal Antibody (ARM884)

CAT. NO. ARM6674

KEY FEATURES

Target	Calcitonin	Clone ID	ARM884
Source / Host	Rabbit	Reactivity	Human
Applications	IHC	Dilution	1:100-1:200
Clonality	Monoclonal	Storage	-20°C

BACKGROUND

Calcitonin is a polypeptide hormone formed by the proteolytic cleavage of a larger prepropeptide. It is produced primarily by the parafollicular C-cells of the thyroid, and is involved in the regulation of calcium and phosphorus metabolism. It decreases the level of calcium and phosphate ions in blood by promoting the incorporation of these ions into bones, as well as inhibiting renal tubular cell reabsorption. Calcitonin expression is found in C-cell hyperplasia and medullary thyroid carcinomas. It is a useful marker in the identification of C-cell proliferative abnormalities, and for distinguishing medullary carcinoma from papillary and follicular thyroid cancer.

APPLICATION

To ensure optimal assay performance, AREX recommends conducting reagent titration tailored to each testing system for optimal detection results.

Application	IHC
Dilution Ratio	1:100-1:200

*Results are sample-specific. Please refer to your local assay conditions and test parameters for reference.

PRODUCT OVERVIEW

Antibody Type	Primary antibodies
Isotype	IgG
Positive Control	Thyroid, Thyroid Medullary Carcinoma
Localization	Cytoplasmic
Form / Buffer	Tris Buffer, pH 7.3 - 7.7, with 1% BSA and <0.1% Sodium Azide
Purification	Purified
Conjugation	Unconjugated
Gene Symbol	CALCA
Entrez Gene ID	796
Uniprot	P01258
Alternative Names	CALC1; Calcitonin

*AREX continuously optimizes our products. Webpage content may not reflect the latest updates. For inquiries, please contact info@arexbio.com or your local distributor.

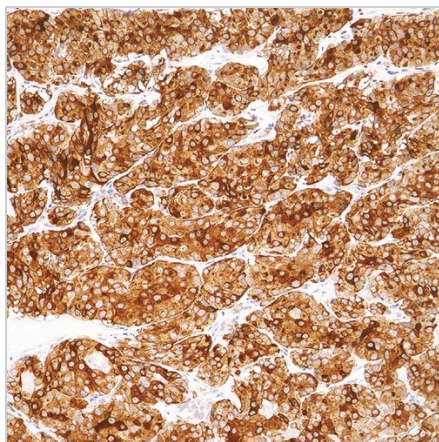
*Clone Number, Reactivity, Source/Host and Clonality can be found in the product name and Key Features section above.

DATASHEET**Calcitonin Rabbit Monoclonal Antibody (ARM884)**

CAT. NO. ARM6674

STORAGE

Store at 4°C short term. For long term storage, store at -20°C, avoiding freeze/thaw cycles.

DATA

Immunohistochemical staining of human medulla tissue using Calcitonin Rabbit Monoclonal Antibody (ARM884)

RESEARCH USE ONLY

For Research Use Only. Not for diagnostic, therapeutics, prophylactic or in vivo use.

More information: [www.arexbio.com / calcitonin-mouse-monoclonal-antibody-arm884-arm6674](http://www.arexbio.com/calcitonin-mouse-monoclonal-antibody-arm884-arm6674)