

## DATASHEET

# CD10 Rabbit Monoclonal Antibody (ARM886)

CAT. NO. ARM6676

### KEY FEATURES

Target	CD10	Clone ID	ARM886
Source / Host	Rabbit	Reactivity	Human
Applications	IHC	Dilution	1:100-1:200
Clonality	Monoclonal	Storage	-20°C

### BACKGROUND

Cluster of Differentiation 10 (CD10) is a cell surface metalloendopeptidase that cleaves and inactivates several peptide hormones including glucagon, enkephalins, and oxytocin. Also known as Common Acute Lymphoblastic Leukemia Antigen (CALLA), it is an important cell surface marker in the diagnosis of human ALL (Acute Lymphocytic Leukemia), and is found positive in precursor B lymphoblastic leukemia/lymphoma, angioimmunoblastic T-cell lymphoma, Burkitt's lymphoma, and follicular germinal center lymphoma. CD10 expression has also been reported in a variety of non-hematolymphoid tissues, particularly of the kidney. It is a useful aid in the diagnosis of various malignant tumours such as renal cell carcinoma, endometrial stromal sarcoma, and hepatocellular carcinoma.

### APPLICATION

To ensure optimal assay performance, AREX recommends conducting reagent titration tailored to each testing system for optimal detection results.

Application	IHC
Dilution Ratio	1:100-1:200

\*Results are sample-specific. Please refer to your local assay conditions and test parameters for reference.

### PRODUCT OVERVIEW

Antibody Type	Primary antibodies
Isotype	IgG
Positive Control	Pancreas, Carcinoid Tumor
Localization	Cytoplasmic
Form / Buffer	Tris Buffer, pH 7.3 - 7.7, with 1% BSA and <0.1% Sodium Azide
Purification	Purified
Conjugation	Unconjugated
Gene Symbol	MME
Entrez Gene ID	4311
Uniprot	P08473
Alternative Names	EPN; Nephilysin; Atriopeptidase; Common acute lymphocytIC, leukemia antigen; CALLA; Enkephalinase; Neutral endopeptidase 24.11; NEP; Neutral endopeptidase; Skin fibroblast elastase; SFE; CD10

\*AREX continuously optimizes our products. Webpage content may not reflect the latest updates. For inquiries, please contact [info@arexbio.com](mailto:info@arexbio.com) or your local distributor.

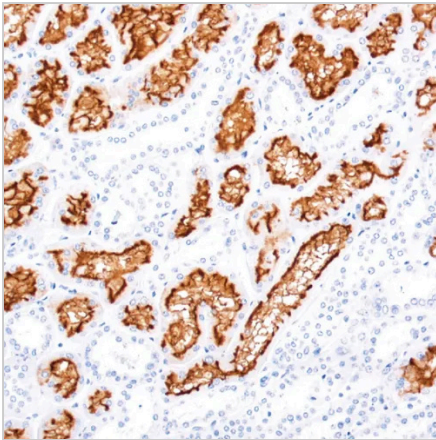
\*Clone Number, Reactivity, Source/Host and Clonality can be found in the product name and Key Features section above.

**DATASHEET****CD10 Rabbit Monoclonal Antibody (ARM886)**

CAT. NO. ARM6676

**STORAGE**

Store at 4°C short term. For long term storage, store at -20°C, avoiding freeze/thaw cycles.

**DATA**

Immunohistochemical staining of human tonsil tissue using CD10 Rabbit Monoclonal Antibody (ARM886).

**RESEARCH USE ONLY**

For Research Use Only. Not for diagnostic, therapeutics, prophylactic or in vivo use.

More information: [www.arexbio.com / cd10-mouse-monoclonal-antibody-arm886-arm6676](http://www.arexbio.com / cd10-mouse-monoclonal-antibody-arm886-arm6676)