

DATASHEET

CD15/Leu-M1 Mouse Monoclonal Antibody (ARM887)

CAT. NO. ARM6677

KEY FEATURES

Target	CD15/Leu-M1	Clone ID	ARM887
Source / Host	Mouse	Reactivity	Human
Applications	IHC	Dilution	1:100-1:200
Clonality	Monoclonal	Storage	-20°C

BACKGROUND

Cluster of Differentiation 15 (CD15) is a carbohydrate adhesion molecule. Positive staining for CD15 and negative staining for leukocyte common antigen or other B- or T-cell lineage markers helps recognize Reed Sternberg cells (RSC) in classic Hodgkin's lymphoma, and distinguishes it from Hodgkin-like neoplasms. CD15 does not stain mesotheliomas and is therefore most useful for distinguishing epithelial mesothelioma from adenocarcinoma.

APPLICATION

To ensure optimal assay performance, AREX recommends conducting reagent titration tailored to each testing system for optimal detection results.

Application	IHC
Dilution Ratio	1:100-1:200

*Results are sample-specific. Please refer to your local assay conditions and test parameters for reference.

PRODUCT OVERVIEW

Antibody Type	Primary antibodies
Isotype	IgG
Positive Control	Hodgkin's Lymphoma
Localization	Cytoplasmic, Membranous
Form / Buffer	Tris Buffer, pH 7.3 - 7.7, with 1% BSA and <0.1% Sodium Azide
Purification	Purified
Conjugation	Unconjugated
Gene Symbol	FUT4
Entrez Gene ID	2526
Uniprot	P22083
Alternative Names	Lewis X, Stage-specific embryonic antigen 1 (SSEA-1)

*AREX continuously optimizes our products. Webpage content may not reflect the latest updates. For inquiries, please contact info@arexbio.com or your local distributor.

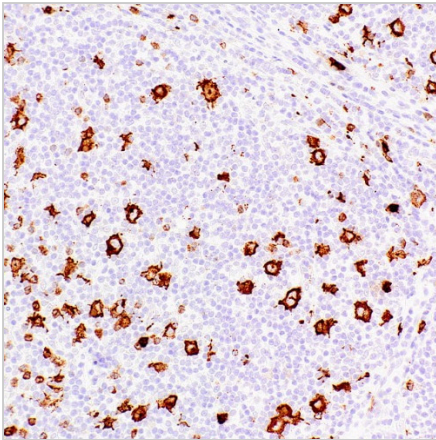
*Clone Number, Reactivity, Source/Host and Clonality can be found in the product name and Key Features section above.

DATASHEET**CD15/Leu-M1 Mouse Monoclonal Antibody (ARM887)**

CAT. NO. ARM6677

STORAGE

Store at 4°C short term. For long term storage, store at -20°C, avoiding freeze/thaw cycles.

DATA

Immunohistochemical staining of human Hodgkin's lymphoma tissue using CD15/Leu-M1 Mouse Monoclonal Antibody (ARM887).

RESEARCH USE ONLY

For Research Use Only. Not for diagnostic, therapeutics, prophylactic or in vivo use.

More information: [www.arexbio.com / cd15-leu-m1-mouse-monoclonal-antibody-arm887-arm6677](http://www.arexbio.com/cd15-leu-m1-mouse-monoclonal-antibody-arm887-arm6677)