

DATASHEET

Chromogranin A Mouse Monoclonal Antibody (ARM889)

CAT. NO. ARM6679

KEY FEATURES

Target	Chromogranin A	Clone ID	ARM889
Source / Host	Mouse	Reactivity	Human
Applications	IHC	Dilution	1:100-1:200
Clonality	Monoclonal	Storage	-20°C

BACKGROUND

Chromogranin A is localized in secretory granules of neurons and endocrine cells in tissues, including pituitary, adrenal medulla, thyroid, pancreatic islets, and the gastrointestinal tract. Neuroendocrine cells exhibit a fine granular immunoreactivity to Anti-Chromogranin A. It is widely recognized that co-expression of keratins and chromogranin A implies a neuroendocrine lineage. High expression of chromogranin A and negative staining with Anti-Keratin is a possible indication of paraganglioma. Positive staining for chromogranin A and neuron-specific enolase is representative of neuroendocrine neoplasms. Many pituitary adenomas and prolactinomas stain positively for chromogranin A.

APPLICATION

To ensure optimal assay performance, AREX recommends conducting reagent titration tailored to each testing system for optimal detection results.

Application	IHC
Dilution Ratio	1:100-1:200

*Results are sample-specific. Please refer to your local assay conditions and test parameters for reference.

PRODUCT OVERVIEW

Antibody Type	Primary antibodies
Isotype	IgG1
Positive Control	Appendix, Pancreas
Localization	Cytoplasmic
Form / Buffer	Tris Buffer, pH 7.3 - 7.7, with 1% BSA and <0.1% Sodium Azide
Purification	Purified
Conjugation	Unconjugated
Gene Symbol	CHGA
Entrez Gene ID	1113
Uniprot	P10645
Alternative Names	Chromogranin-A; CgA; Pituitary secretory protein I; SP-I

*AREX continuously optimizes our products. Webpage content may not reflect the latest updates. For inquiries, please contact info@arexbio.com or your local distributor.

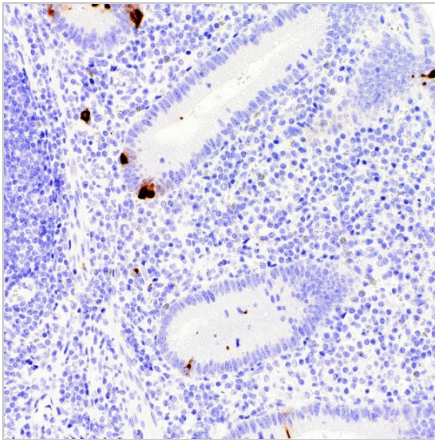
*Clone Number, Reactivity, Source/Host and Clonality can be found in the product name and Key Features section above.

DATASHEET**Chromogranin A Mouse Monoclonal Antibody (ARM889)**

CAT. NO. ARM6679

STORAGE

Store at 4°C short term. For long term storage, store at -20°C, avoiding freeze/thaw cycles.

DATA

Immunohistochemical staining of appendix tissue sections using Chromogranin A Mouse Monoclonal Antibody (ARM889).

RESEARCH USE ONLY

For Research Use Only. Not for diagnostic, therapeutics, prophylactic or in vivo use.

More information: [www.arexbio.com / chromogranin-a-mouse-monoclonal-antibody-arm889-arm6679](http://www.arexbio.com/chromogranin-a-mouse-monoclonal-antibody-arm889-arm6679)