

DATASHEET

Cytokeratin 5/6 Mouse Monoclonal Antibody (ARM890)

CAT. NO. ARM6680

KEY FEATURES

Target	Cytokeratin 5/6	Clone ID	ARM890
Source / Host	Mouse	Reactivity	Human
Applications	IHC	Dilution	1:100-1:200
Clonality	Monoclonal	Storage	-20°C

BACKGROUND

Cytokeratin 5 dimerizes with Cytokeratin 14 to form the cytoskeleton of basal epithelial cells, while Cytokeratin 6 multimerizes with Cytokeratin 16 and/or 17 in the tongue, oral epithelia and esophagus, hair follicles, and glandular epithelia. Anti-Cytokeratin 5 & 6 rarely stains lung adenocarcinoma, but will produce small foci or scattered staining patterns in these Cytokeratin 5 & 6(+) samples. Cytokeratin 5 & 6 staining is useful for identifying squamous cell carcinoma, and can be used to determine the malignancies of myoepithelial cells in the breast and prostate. Cytokeratin 5 & 6 also rarely stains carcinomas of the breast, colon, and prostate. A panel of antibodies against Cytokeratin 5 & 6, TTF-1, napsin A, p63, SOX2, DSC3, and desmoglein-3 is useful for differentiating lung squamous cell carcinoma from lung adenocarcinoma and large cell carcinoma.

APPLICATION

To ensure optimal assay performance, AREX recommends conducting reagent titration tailored to each testing system for optimal detection results.

Application	IHC
Dilution Ratio	1:100-1:200

*Results are sample-specific. Please refer to your local assay conditions and test parameters for reference.

PRODUCT OVERVIEW

Antibody Type	Primary antibodies
Isotype	IgG1
Positive Control	Squamous Cells of Lung tissues
Localization	Cytoplasmic
Form / Buffer	Tris Buffer, pH 7.3 - 7.7, with 1% BSA and <0.1% Sodium Azide
Purification	Purified
Conjugation	Unconjugated
Gene Symbol	KRT5; KRT6A
Entrez Gene ID	3853
Uniprot	P02538
Alternative Names	Keratin type II cytoskeletal 5; 58 kDa cytokeratin; Cytokeratin-5; CK-5; Keratin-5; K5; Type-II keratin Kb5; K6A; KRT6D; Keratin type II cytoskeletal 6A; Cytokeratin-6A; CK-6A; Cytokeratin-6D; CK-6D; Keratin-6A; K6A; Type-II keratin Kb6; allergen Hom s 5

*AREX continuously optimizes our products. Webpage content may not reflect the latest updates. For inquiries, please contact info@arexbio.com or your local distributor.

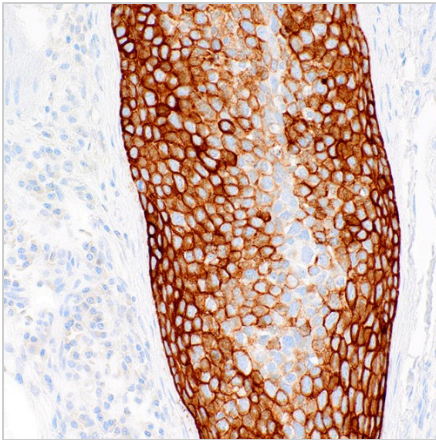
*Clone Number, Reactivity, Source/Host and Clonality can be found in the product name and Key Features section above.

DATASHEET**Cytokeratin 5/6 Mouse Monoclonal Antibody (ARM890)**

CAT. NO. ARM6680

STORAGE

Store at 4°C short term. For long term storage, store at -20°C, avoiding freeze/thaw cycles.

DATA

Immunohistochemical staining of human esophagus tissue using Cytokeratin 5/6 Mouse Monoclonal Antibody (ARM890).

RESEARCH USE ONLY

For Research Use Only. Not for diagnostic, therapeutics, prophylactic or in vivo use.

More information: [www.arexbio.com / cytokeratin-5-6-mouse-monoclonal-antibody-arm890-arm6680](http://www.arexbio.com/cytokeratin-5-6-mouse-monoclonal-antibody-arm890-arm6680)