

## DATASHEET

# BRAF V600E Mouse Monoclonal Antibody (ARM892)

CAT. NO. ARM6682

### KEY FEATURES

Target	BRAF V600E	Clone ID	ARM892
Source / Host	Mouse	Reactivity	Human
Applications	IHC	Dilution	1:100-1:200
Clonality	Monoclonal	Storage	-20°C

### BACKGROUND

Serine/Threonine-Protein Kinase B-Raf (BRAF) is a cytoplasmic serine-threonine kinase of the RAF family, which mediates downstream cellular responses to growth signals through the mitogen-activated protein kinase (MAPK) signaling pathway. Oncogenic mutations in the BRAF gene, 80% of which are a single V600E substitution within the kinase domain, constitutively activate the MAPK signaling pathway and result in increased cell proliferation and apoptosis resistance. The V600E mutation is observed in colorectal cancer, non-Hodgkin's lymphoma, papillary thyroid carcinoma, malignant melanoma, non-small-cell lung carcinoma, and lung adenocarcinoma. BRAF V600E is therefore an important immunohistochemical marker for tumour diagnosis and prognosis.

### APPLICATION

To ensure optimal assay performance, AREX recommends conducting reagent titration tailored to each testing system for optimal detection results.

Application	IHC
Dilution Ratio	1:100-1:200

\*Results are sample-specific. Please refer to your local assay conditions and test parameters for reference.

### PRODUCT OVERVIEW

Antibody Type	Primary antibodies
Isotype	IgG2b
Positive Control	Colorectal Adenocarcinoma, Thyroid Papillary Carcinoma with the BRAF V600E Mutation
Localization	Cytoplasmic
Form / Buffer	Tris Buffer, pH 7.3 - 7.7, with 1% BSA and <0.1% Sodium Azide
Purification	Purified
Conjugation	Unconjugated
Gene Symbol	BRAF
Entrez Gene ID	673
Uniprot	P15056
Alternative Names	B-Raf proto-oncogene (V600E mutation)

\*AREX continuously optimizes our products. Webpage content may not reflect the latest updates. For inquiries, please contact [info@arexbio.com](mailto:info@arexbio.com) or your local distributor.

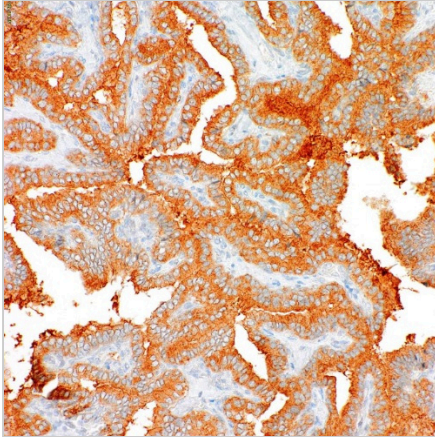
\*Clone Number, Reactivity, Source/Host and Clonality can be found in the product name and Key Features section above.

**DATASHEET****BRAF V600E Mouse Monoclonal Antibody (ARM892)**

CAT. NO. ARM6682

**STORAGE**

Store at 4°C short term. For long term storage, store at -20°C, avoiding freeze/thaw cycles.

**DATA**

Immunohistochemical staining of human thyroid papillary carcinoma tissue using BRAF V600E Mouse Monoclonal Antibody (ARM892).

**RESEARCH USE ONLY**

For Research Use Only. Not for diagnostic, therapeutics, prophylactic or in vivo use.

More information: [www.arexbio.com / braf-v600e-mouse-monoclonal-antibody-arm892-arm6682](http://www.arexbio.com/braf-v600e-mouse-monoclonal-antibody-arm892-arm6682)