

**DATASHEET**

**Napsin A Mouse Monoclonal Antibody (ARM893)**

CAT. NO. ARM6683

**KEY FEATURES**

Target	Napsin A	Clone ID	ARM893
Source / Host	Mouse	Reactivity	Human
Applications	IHC	Dilution	1:100-1:200
Clonality	Monoclonal	Storage	-20°C

**BACKGROUND**

Napsin A is a pepsin-like aspartic proteinase that is closely related to Napsin B. It is expressed mainly in the lung and kidney, and is involved in the correct folding, targeting, and control of aspartic proteinase zymogens. Napsin A expression has been indicated in type II pneumocytes and adenocarcinomas of the lung and kidney. Anti-Napsin A is also useful for differentiating between primary lung adenocarcinomas and adenocarcinomas of other organs, due to the high expression of Napsin A in adenocarcinomas of the lung.

**APPLICATION**

To ensure optimal assay performance, AREX recommends conducting reagent titration tailored to each testing system for optimal detection results.

Application	IHC
Dilution Ratio	1:100-1:200

\*Results are sample-specific. Please refer to your local assay conditions and test parameters for reference.

**PRODUCT OVERVIEW**

Antibody Type	Primary antibodies
Isotype	IgG1
Positive Control	Lung Adenocarcinoma, Kidney, Renal Cell
Localization	Cytoplasmic
Form / Buffer	Tris Buffer, pH 7.3 - 7.7, with 1% BSA and <0.1% Sodium Azide
Purification	Purified
Conjugation	Unconjugated
Gene Symbol	NAPSA
Entrez Gene ID	9476
Uniprot	O96009
Alternative Names	NAP1; NAPA; Napsin-A; Aspartyl protease 4; ASP4; Asp 4; Napsin-1; TA01/TA02

\*AREX continuously optimizes our products. Webpage content may not reflect the latest updates. For inquiries, please contact [info@arexbio.com](mailto:info@arexbio.com) or your local distributor.

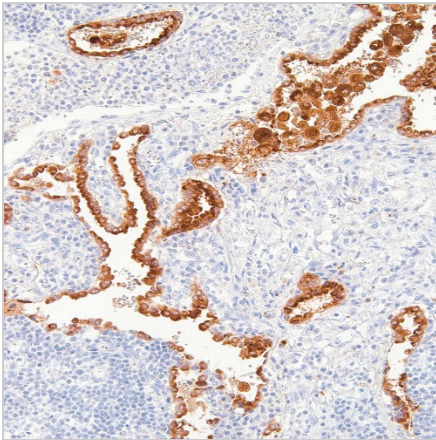
\*Clone Number, Reactivity, Source/Host and Clonality can be found in the product name and Key Features section above.

**DATASHEET****Napsin A Mouse Monoclonal Antibody (ARM893)**

CAT. NO. ARM6683

**STORAGE**

Store at 4°C short term. For long term storage, store at -20°C, avoiding freeze/thaw cycles.

**DATA**

Immunohistochemical staining of human lung tissue using Napsin A Mouse Monoclonal Antibody (ARM893).

**RESEARCH USE ONLY**

For Research Use Only. Not for diagnostic, therapeutics, prophylactic or in vivo use.

More information: [www.arexbio.com/napsin-a-mouse-monoclonal-antibody-arm893-arm6683](http://www.arexbio.com/napsin-a-mouse-monoclonal-antibody-arm893-arm6683)