

DATASHEET

Synaptophysin Mouse Monoclonal Antibody (ARM896)

CAT. NO. ARM6686

KEY FEATURES

Target	Synaptophysin	Clone ID	ARM896
Source / Host	Mouse	Reactivity	Human
Applications	IHC	Dilution	1:100-1:200
Clonality	Monoclonal	Storage	-20°C

BACKGROUND

Synaptophysin is a synaptic vesicle glycoprotein used in synaptic transmission of neurons. Anti-Synaptophysin stains the gastrointestinal mucosa and lung neuroendocrine cells of the human adrenal medulla, carotid body, pancreas, pituitary, skin, and thyroid. Synaptophysin also stains neuroendocrine neoplasms. Use of Anti-Synaptophysin produces diffuse, finely granular, cytoplasmic staining. The presence of synaptophysin does not correlate with neuron-specific enolase or other neuroendocrine markers.

APPLICATION

To ensure optimal assay performance, AREX recommends conducting reagent titration tailored to each testing system for optimal detection results.

Application	IHC
Dilution Ratio	1:100-1:200

*Results are sample-specific. Please refer to your local assay conditions and test parameters for reference.

PRODUCT OVERVIEW

Antibody Type	Primary antibodies
Isotype	IgG1
Positive Control	Pancreatic Islet Cells, Neuroendocrine Tumor
Localization	Cytoplasmic
Form / Buffer	Tris Buffer, pH 7.3 - 7.7, with 1% BSA and <0.1% Sodium Azide
Purification	Purified
Conjugation	Unconjugated
Gene Symbol	SYP
Entrez Gene ID	6855
Uniprot	P08247
Alternative Names	Synaptophysin; Major synaptic vesicle protein p38

*AREX continuously optimizes our products. Webpage content may not reflect the latest updates. For inquiries, please contact info@arexbio.com or your local distributor.

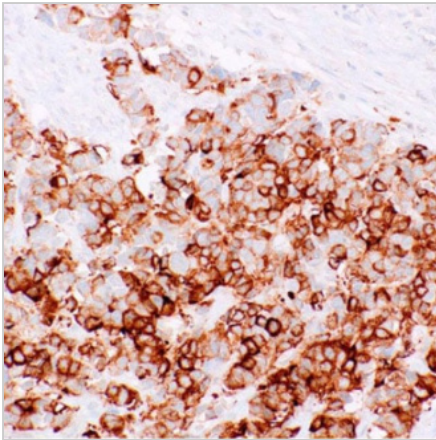
*Clone Number, Reactivity, Source/Host and Clonality can be found in the product name and Key Features section above.

DATASHEET**Synaptophysin Mouse Monoclonal Antibody (ARM896)**

CAT. NO. ARM6686

STORAGE

Store at 4°C short term. For long term storage, store at -20°C, avoiding freeze/thaw cycles.

DATA

Immunohistochemical staining of human neuroendocrine tumor tissue using Synaptophysin Mouse Monoclonal Antibody (ARM896).

RESEARCH USE ONLY

For Research Use Only. Not for diagnostic, therapeutics, prophylactic or in vivo use.

More information: [www.arexbio.com / synaptophysin-mouse-monoclonal-antibody-arm896-arm6686](http://www.arexbio.com/synaptophysin-mouse-monoclonal-antibody-arm896-arm6686)