

## DATASHEET

# Progesterone Receptor Mouse Monoclonal Antibody (ARM898)

CAT. NO. ARM6688

### KEY FEATURES

Target	Progesterone Receptor	Clone ID	ARM898
Source / Host	Mouse	Reactivity	Human
Applications	IHC	Dilution	1:100-1:200
Clonality	Monoclonal	Storage	-20°C

### BACKGROUND

Progesterone Receptor (PR), also known as NR3C3 (Nuclear Receptor Subfamily 3, Group C, Member 3), is an intracellular steroid receptor which mediates the physiological effects of progesterone, a female sex hormone involved in the menstrual cycle, pregnancy, and embryogenesis. Progesterone receptor expression has been linked to the prediction of prognosis in breast cancer, as well as associated responses to endocrine therapy. The progesterone receptor has also been linked to an increased risk for ovarian cancer.

### APPLICATION

To ensure optimal assay performance, AREX recommends conducting reagent titration tailored to each testing system for optimal detection results.

Application	IHC
Dilution Ratio	1:100-1:200

\*Results are sample-specific. Please refer to your local assay conditions and test parameters for reference.

### PRODUCT OVERVIEW

Antibody Type	Primary antibodies
Isotype	IgG1, kappa
Positive Control	Breast, Breast Carcinoma
Localization	Nuclear
Form / Buffer	Tris Buffer, pH 7.3 - 7.7, with 1% BSA and <0.1% Sodium Azide
Purification	Purified
Conjugation	Unconjugated
Gene Symbol	PGR
Entrez Gene ID	5241
Uniprot	P06401
Alternative Names	NR3C3; Progesterone receptor; PR; Nuclear receptor subfamily 3 group C member 3

\*AREX continuously optimizes our products. Webpage content may not reflect the latest updates. For inquiries, please contact [info@arexbio.com](mailto:info@arexbio.com) or your local distributor.

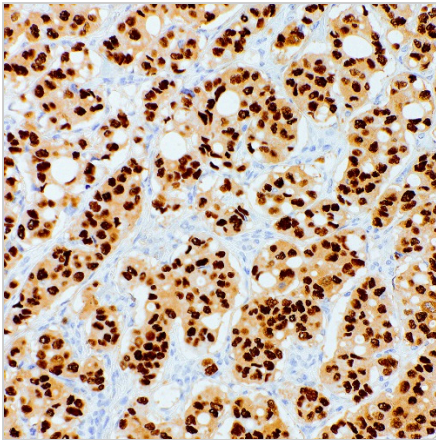
\*Clone Number, Reactivity, Source/Host and Clonality can be found in the product name and Key Features section above.

**DATASHEET****Progesterone Receptor Mouse Monoclonal Antibody (ARM898)**

CAT. NO. ARM6688

**STORAGE**

Store at 4°C short term. For long term storage, store at -20°C, avoiding freeze/thaw cycles.

**DATA**

Immunohistochemical staining of human breast tissue using Progesterone Receptor Mouse Monoclonal Antibody (ARM898).

**RESEARCH USE ONLY**

For Research Use Only. Not for diagnostic, therapeutics, prophylactic or in vivo use.

More information: [www.arexbio.com / progesterone-receptor-mouse-monoclonal-antibody-arm898-arm6688](http://www.arexbio.com/progesterone-receptor-mouse-monoclonal-antibody-arm898-arm6688)