

**DATASHEET**

**FOLR1 Mouse Monoclonal Antibody (ARM900)**

CAT. NO. ARM6690

**KEY FEATURES**

Target	FOLR1	Clone ID	ARM900
Source / Host	Mouse	Reactivity	Human
Applications	IHC	Dilution	1:100-1:200
Clonality	Monoclonal	Storage	-20°C

**BACKGROUND**

The protein encoded by this gene is a member of the folate receptor family. Members of this gene family bind folic acid and its reduced derivatives, and transport 5-methyltetrahydrofolate into cells. This gene product is a secreted protein that either anchors to membranes via a glycosyl-phosphatidylinositol linkage or exists in a soluble form. Mutations in this gene have been associated with neurodegeneration due to cerebral folate transport deficiency. Due to the presence of two promoters, multiple transcription start sites, and alternative splicing, multiple transcript variants encoding the same protein have been found for this gene.

**APPLICATION**

To ensure optimal assay performance, AREX recommends conducting reagent titration tailored to each testing system for optimal detection results.

Application	IHC
Dilution Ratio	1:100-1:200

\*Results are sample-specific. Please refer to your local assay conditions and test parameters for reference.

**PRODUCT OVERVIEW**

Antibody Type	Primary antibodies
Isotype	
Positive Control	
Localization	
Form / Buffer	Tris Buffer, pH 7.3 - 7.7, with 1% BSA and <0.1% Sodium Azide
Purification	Purified
Conjugation	Unconjugated
Gene Symbol	FOLR1
Entrez Gene ID	2348
Uniprot	P15328
Alternative Names	Folate receptor alpha

\*AREX continuously optimizes our products. Webpage content may not reflect the latest updates. For inquiries, please contact [info@arexbio.com](mailto:info@arexbio.com) or your local distributor.

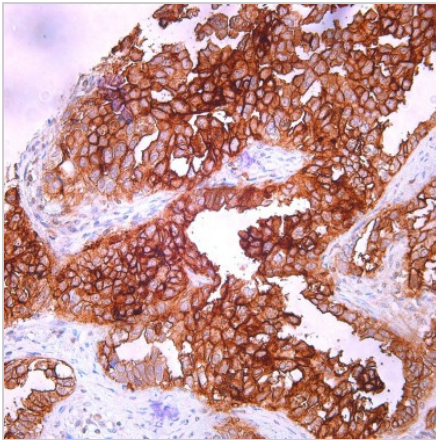
\*Clone Number, Reactivity, Source/Host and Clonality can be found in the product name and Key Features section above.

**DATASHEET****FOLR1 Mouse Monoclonal Antibody (ARM900)**

CAT. NO. ARM6690

**STORAGE**

Store at 4°C short term. For long term storage, store at -20°C, avoiding freeze/thaw cycles.

**DATA**

Immunohistochemical staining of human ovary tissue sections using FOLR1 Mouse Monoclonal Antibody (ARM900).

**RESEARCH USE ONLY**

For Research Use Only. Not for diagnostic, therapeutics, prophylactic or in vivo use.

More information: [www.arexbio.com / folr1-mouse-monoclonal-antibody-arm900-arm6690](http://www.arexbio.com/folr1-mouse-monoclonal-antibody-arm900-arm6690)