

DATASHEET

FOXP1 Mouse Monoclonal Antibody (ARM907)

CAT. NO. ARM6697

KEY FEATURES

Target	FOXP1	Clone ID	ARM907
Source / Host	Mouse	Reactivity	Human
Applications	IHC	Dilution	1:100-1:200
Clonality	Monoclonal	Storage	-20°C

BACKGROUND

Forkhead box protein P1 (FOXP1) is a transcription factor involved in brain, heart, and lung development. Diffuse large B-cell lymphoma (DLBCL) can be separated into two subtypes, germinal center B-cell or activated B-cell, or otherwise be defined as unclassified DLBCL, which can be difficult to differentiate. By using a panel of antibodies against CD10, BCL6, MUM1/IRF4, GCET1, FOXP1, LMO2, and BCL2, the sub-classification of DLBCL can be made.

APPLICATION

To ensure optimal assay performance, AREX recommends conducting reagent titration tailored to each testing system for optimal detection results.

Application	IHC
Dilution Ratio	1:100-1:200

*Results are sample-specific. Please refer to your local assay conditions and test parameters for reference.

PRODUCT OVERVIEW

Antibody Type	Primary antibodies
Isotype	IgG
Positive Control	Tonsil, Lymph Node
Localization	Nuclear
Form / Buffer	Tris Buffer, pH 7.3 - 7.7, with 1% BSA and <0.1% Sodium Azide
Purification	Purified
Conjugation	Unconjugated
Gene Symbol	FOXP1
Entrez Gene ID	27086
Uniprot	Q9H334
Alternative Names	Forkhead box protein P1

*AREX continuously optimizes our products. Webpage content may not reflect the latest updates. For inquiries, please contact info@arexbio.com or your local distributor.

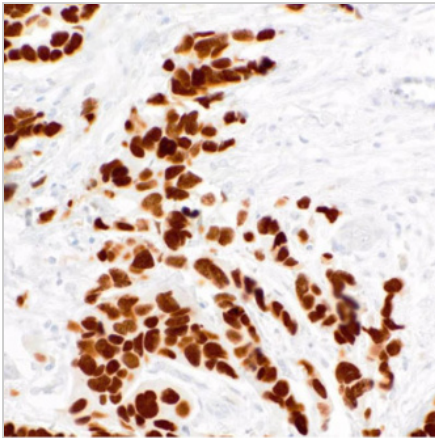
*Clone Number, Reactivity, Source/Host and Clonality can be found in the product name and Key Features section above.

DATASHEET**FOXP1 Mouse Monoclonal Antibody (ARM907)**

CAT. NO. ARM6697

STORAGE

Store at 4°C short term. For long term storage, store at -20°C, avoiding freeze/thaw cycles.

DATA

Immunohistochemical staining of human breast tissue using FOXP1 Mouse Monoclonal Antibody (ARM907).

RESEARCH USE ONLY

For Research Use Only. Not for diagnostic, therapeutics, prophylactic or in vivo use.

More information: [www.arexbio.com / foxp1-mouse-monoclonal-antibody-arm907-arm6697](http://www.arexbio.com/foxp1-mouse-monoclonal-antibody-arm907-arm6697)