

## DATASHEET

# BCL-2 Mouse Monoclonal Antibody (ARM910)

CAT. NO. ARM6700

### KEY FEATURES

Target	BCL-2	Clone ID	ARM910
Source / Host	Mouse	Reactivity	Human
Applications	IHC	Dilution	1:100-1:200
Clonality	Monoclonal	Storage	-20°C

### BACKGROUND

B - Cell Lymphoma 2 (BCL2) is involved in regulation of cell apoptosis by controlling mitochondrial permeability and release of cytochrome c. It also has critical roles in normal cell physiology related to neuronal activity, autophagy, calcium handling, mitochondrial dynamics, and energetics. BCL2 overexpression has been shown to promote cell survival by suppressing apoptosis, and is found to be correlated with poor disease prognosis in breast, prostate, ovarian, endometrial, and colon cancers. In follicular lymphoma, Anti - BCL2 reacts negatively with germinal centers and positively with neoplastic follicles. In lymphoid lesions, BCL2 staining is useful for distinguishing reactive and neoplastic follicular proliferations, and for identifying minimal residual disease in the bone marrow of follicular lymphoma patients. BCL2 is now a useful target of human cancer therapy.

### APPLICATION

To ensure optimal assay performance, AREX recommends conducting reagent titration tailored to each testing system for optimal detection results.

Application	IHC
Dilution Ratio	1:100-1:200

\*Results are sample-specific. Please refer to your local assay conditions and test parameters for reference.

### PRODUCT OVERVIEW

Antibody Type	Primary antibodies
Isotype	IgG1
Positive Control	Tonsil
Localization	Cytoplasmic
Form / Buffer	Tris Buffer, pH 7.3 - 7.7, with 1% BSA and <0.1% Sodium Azide
Purification	Purified
Conjugation	Unconjugated
Gene Symbol	BCL2
Entrez Gene ID	596
Uniprot	P10415
Alternative Names	B-cell lymphoma 2

\*AREX continuously optimizes our products. Webpage content may not reflect the latest updates. For inquiries, please contact [info@arexbio.com](mailto:info@arexbio.com) or your local distributor.

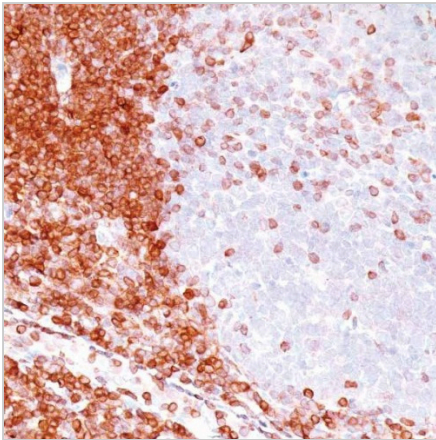
\*Clone Number, Reactivity, Source/Host and Clonality can be found in the product name and Key Features section above.

**DATASHEET****BCL-2 Mouse Monoclonal Antibody (ARM910)**

CAT. NO. ARM6700

**STORAGE**

Store at 4°C short term. For long term storage, store at -20°C, avoiding freeze/thaw cycles.

**DATA**

Immunohistochemistry (Formalin/PFA-fixed paraffin-embedded sections) analysis of Hodgkin's Lymphoma sections labeling BCL2 with ARM910.

**RESEARCH USE ONLY**

For Research Use Only. Not for diagnostic, therapeutics, prophylactic or in vivo use.

More information: [www.arexbio.com / bcl-2-mouse-monoclonal-antibody-arm910-arm6700](http://www.arexbio.com/bcl-2-mouse-monoclonal-antibody-arm910-arm6700)