

DATASHEET

CK34Beta E Mouse Monoclonal Antibody (ARM913)

CAT. NO. ARM6703

KEY FEATURES

Target	CK34Beta E	Clone ID	ARM913
Source / Host	Mouse	Reactivity	Human
Applications	IHC	Dilution	1:100-1:200
Clonality	Monoclonal	Storage	-20°C

BACKGROUND

Cytokeratin 34bE12 antibody recognizes cytokeratin 1, 5, 10, and 14 in the Moll catalog (MW 68kDa, 58kDa, 56.5kDa, and 50kDa), respectively. Cytokeratin 34bE12 antibody promises to be a specific marker useful in differential identification of squamous carcinomas from adenocarcinomas and differential diagnosis of benign and malignant tumors of prostatic gland. In normal cells, it labels squamous, ductal and other complex epithelia. It reacts with benign small-acinar lesions of the prostate and does not react with hepatocytes, pancreatic acinar cells, proximal renal tubes or endometrial glands. In tumor cells, this antibody is reactive with both squamous and ductal neoplasms and variably with those derived from simple epithelium.

APPLICATION

To ensure optimal assay performance, AREX recommends conducting reagent titration tailored to each testing system for optimal detection results.

Application	IHC
Dilution Ratio	1:100-1:200

*Results are sample-specific. Please refer to your local assay conditions and test parameters for reference.

PRODUCT OVERVIEW

Antibody Type	Primary antibodies
Isotype	IgG1
Positive Control	Prostate tissues, Lung Squamous Cells
Localization	Cytoplasmic
Form / Buffer	Tris Buffer, pH 7.3 - 7.7, with 1% BSA and <0.1% Sodium Azide
Purification	Purified
Conjugation	Unconjugated
Gene Symbol	KRT family
Entrez Gene ID	Multiple
Uniprot	Multiple
Alternative Names	High molecular weight cytokeratin (KRT1/5/10/14)

*AREX continuously optimizes our products. Webpage content may not reflect the latest updates. For inquiries, please contact info@arexbio.com or your local distributor.

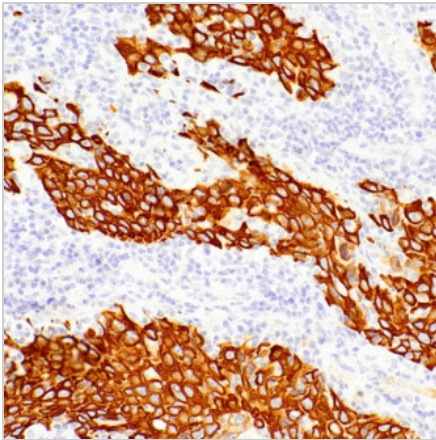
*Clone Number, Reactivity, Source/Host and Clonality can be found in the product name and Key Features section above.

DATASHEET**CK34Beta E Mouse Monoclonal Antibody (ARM913)**

CAT. NO. ARM6703

STORAGE

Store at 4°C short term. For long term storage, store at -20°C, avoiding freeze/thaw cycles.

DATA

Immunohistochemistry (Formalin/PFA-fixed paraffin-embedded sections) analysis of Human cervix tissue sections labeling CK34Beta E with ARM913.

RESEARCH USE ONLY

For Research Use Only. Not for diagnostic, therapeutics, prophylactic or in vivo use.

More information: [www.arexbio.com / ck34beta-e-mouse-monoclonal-antibody-arm913-arm6703](http://www.arexbio.com/ck34beta-e-mouse-monoclonal-antibody-arm913-arm6703)