

DATASHEET

NSE Mouse Monoclonal Antibody (ARM914)

CAT. NO. ARM6704

KEY FEATURES

Target	NSE	Clone ID	ARM914
Source / Host	Mouse	Reactivity	Human
Applications	IHC	Dilution	1:100-1:200
Clonality	Monoclonal	Storage	-20°C

BACKGROUND

Neuron - Specific Enolase (NSE), also known as Enolase 2 (ENO2), is one of three enolase enzymes found in mammals, and acts as a phosphopyruvate hydratase. This mammalian glycolytic isoenzyme is located specifically in neurons of neuroendocrine cells, as well as tumours associated with those neurons. However, it has also been detected immunohistochemically in non - neoplastic cells of the pituitary, peptide - secreting tissues, pinealocytes, neuroendocrine cells of the lung, thyroid, parafollicular cells, adrenal medulla, islets of Langerhans, Merkel cells of the skin, and melanocytes. NSE is a useful marker for identifying normal striated muscle, hepatocytes, and peripheral nerves. Anti - NSE may detect for neuroendocrine differentiation, only when used in a panel of antibodies including more specific markers such as synaptophysin, chromogranin, and neurofilament.

APPLICATION

To ensure optimal assay performance, AREX recommends conducting reagent titration tailored to each testing system for optimal detection results.

Application	IHC
Dilution Ratio	1:100-1:200

*Results are sample-specific. Please refer to your local assay conditions and test parameters for reference.

PRODUCT OVERVIEW

Antibody Type	Primary antibodies
Isotype	IgG2a, kappa
Positive Control	Pancreas tissues
Localization	Cytoplasmic
Form / Buffer	Tris Buffer, pH 7.3 - 7.7, with 1% BSA and <0.1% Sodium Azide
Purification	Purified
Conjugation	Unconjugated
Gene Symbol	ENO2
Entrez Gene ID	2027
Uniprot	P09104
Alternative Names	Neuron-specific enolase, Enolase 2

*AREX continuously optimizes our products. Webpage content may not reflect the latest updates. For inquiries, please contact info@arexbio.com or your local distributor.

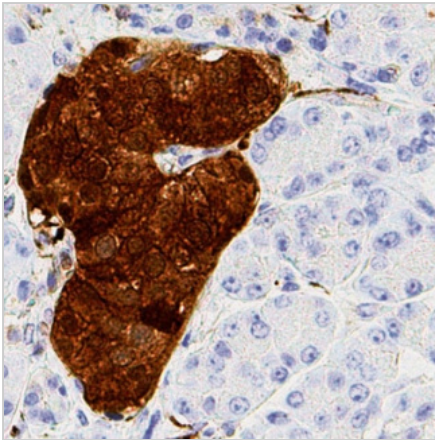
*Clone Number, Reactivity, Source/Host and Clonality can be found in the product name and Key Features section above.

DATASHEET**NSE Mouse Monoclonal Antibody (ARM914)**

CAT. NO. ARM6704

STORAGE

Store at 4°C short term. For long term storage, store at -20°C, avoiding freeze/thaw cycles.

DATA

Immunohistochemistry (Formalin/PFA-fixed paraffin-embedded sections) analysis of Carcinoid Tumour sections labeling NSE with ARM914.

RESEARCH USE ONLY

For Research Use Only. Not for diagnostic, therapeutics, prophylactic or in vivo use.

More information: [www.arexbio.com / nse-mouse-monoclonal-antibody-arm914-arm6704](http://www.arexbio.com/nse-mouse-monoclonal-antibody-arm914-arm6704)