

DATASHEET

Podoplanin Mouse Monoclonal Antibody (ARM915)

CAT. NO. ARM6705

KEY FEATURES

Target	Podoplanin	Clone ID	ARM915
Source / Host	Mouse	Reactivity	Human
Applications	IHC	Dilution	1:100-1:200
Clonality	Monoclonal	Storage	-20°C

BACKGROUND

Podoplanin is a transmembrane mucoprotein specifically expressed in the endothelium of lymphatic capillaries, while remaining absent from the blood vasculature. The protein is co-localized with VEGFR3/FLT4 in normal skin and kidney. Anti-Podoplanin is useful in the identification of lymphangiomas, Kaposi's sarcomas, epithelioid mesotheliomas, hemangioblastomas, seminomas, and some angiosarcomas that likely have lymphatic differentiation.

APPLICATION

To ensure optimal assay performance, AREX recommends conducting reagent titration tailored to each testing system for optimal detection results.

Application	IHC
Dilution Ratio	1:100-1:200

*Results are sample-specific. Please refer to your local assay conditions and test parameters for reference.

PRODUCT OVERVIEW

Antibody Type	Primary antibodies
Isotype	IgG2a, κ
Positive Control	Tonsil
Localization	Cytoplasmic
Form / Buffer	Tris Buffer, pH 7.3 - 7.7, with 1% BSA and <0.1% Sodium Azide
Purification	Purified
Conjugation	Unconjugated
Gene Symbol	PDPN
Entrez Gene ID	10630
Uniprot	Q86YL7
Alternative Names	Podoplanin; Aggrus; Glycoprotein 36; Gp36; PA2.26 antigen; T1-alpha; T1A; PDPN; GP36

*AREX continuously optimizes our products. Webpage content may not reflect the latest updates. For inquiries, please contact info@arexbio.com or your local distributor.

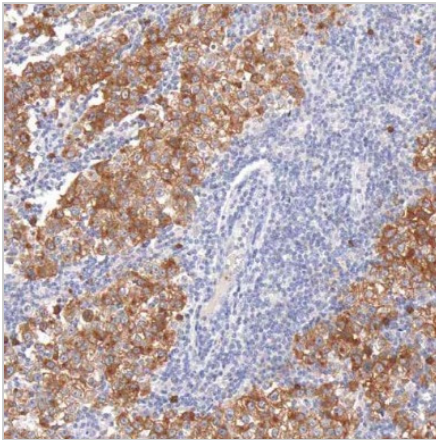
*Clone Number, Reactivity, Source/Host and Clonality can be found in the product name and Key Features section above.

DATASHEET**Podoplanin Mouse Monoclonal Antibody (ARM915)**

CAT. NO. ARM6705

STORAGE

Store at 4°C short term. For long term storage, store at -20°C, avoiding freeze/thaw cycles.

DATA

Immunohistochemistry (Formalin/PFA-fixed paraffin-embedded sections) analysis of Testicular Cancer sections labeling Podoplanin with ARM915.

RESEARCH USE ONLY

For Research Use Only. Not for diagnostic, therapeutics, prophylactic or in vivo use.

More information: [www.arexbio.com / podoplanin-mouse-monoclonal-antibody-arm915-arm6705](http://www.arexbio.com/podoplanin-mouse-monoclonal-antibody-arm915-arm6705)