

DATASHEET

EMA Mouse Monoclonal Antibody (ARM917)

CAT. NO. ARM6707

KEY FEATURES

Target	EMA	Clone ID	ARM917
Source / Host	Mouse	Reactivity	Human
Applications	IHC	Dilution	1:100-1:200
Clonality	Monoclonal	Storage	-20°C

BACKGROUND

Epithelial Membrane Antigen (EMA) is a mucin glycoprotein expressed on apical epithelial cells. Anti - EMA positively stains normal and neoplastic cells including sweat glands, mammary epithelia, and squamous epithelia. Adrenal carcinoma, seminomas, paraganglioma, hepatocellular carcinoma, and embryonal carcinomas exhibit a negative stain. As Anti - EMA commonly reacts positively with meningioma, it is useful for differentiating this tumour from other intracranial neoplasms such as schwannomas.

APPLICATION

To ensure optimal assay performance, AREX recommends conducting reagent titration tailored to each testing system for optimal detection results.

Application	IHC
Dilution Ratio	1:100-1:200

*Results are sample-specific. Please refer to your local assay conditions and test parameters for reference.

PRODUCT OVERVIEW

Antibody Type	Primary antibodies
Isotype	IgG2a
Positive Control	Endometrium, Breast, Colon tissues
Localization	Membranous, Cytoplasmic
Form / Buffer	Tris Buffer, pH 7.3 - 7.7, with 1% BSA and <0.1% Sodium Azide
Purification	Purified
Conjugation	Unconjugated
Gene Symbol	MUC1
Entrez Gene ID	4582
Uniprot	P15941
Alternative Names	Epithelial membrane antigen, Mucin-1, CA15-3

*AREX continuously optimizes our products. Webpage content may not reflect the latest updates. For inquiries, please contact info@arexbio.com or your local distributor.

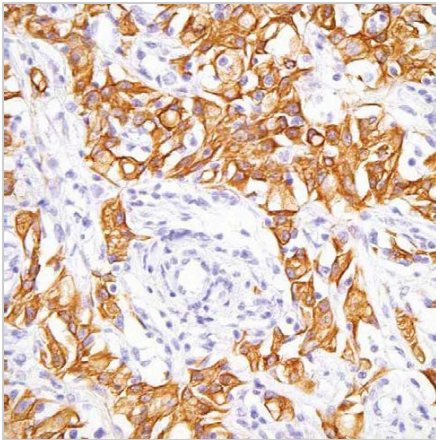
*Clone Number, Reactivity, Source/Host and Clonality can be found in the product name and Key Features section above.

DATASHEET**EMA Mouse Monoclonal Antibody (ARM917)**

CAT. NO. ARM6707

STORAGE

Store at 4°C short term. For long term storage, store at -20°C, avoiding freeze/thaw cycles.

DATA

Immunohistochemistry (Formalin/PFA-fixed paraffin-embedded sections) analysis of human breast sections labeling EMA with ARM917.

RESEARCH USE ONLY

For Research Use Only. Not for diagnostic, therapeutics, prophylactic or in vivo use.

More information: www.arexbio.com/ema-mouse-monoclonal-antibody-arm917-arm6707