

DATASHEET

Actin, Muscle Specific Mouse Monoclonal Antibody (ARM918)

CAT. NO. ARM6708

KEY FEATURES

Target	Actin, Muscle Specific	Clone ID	ARM918
Source / Host	Mouse	Reactivity	Human
Applications	IHC	Dilution	1:100-1:200
Clonality	Monoclonal	Storage	-20°C

BACKGROUND

Actin is part of the cytoskeletal system of every cell type. It can be classified based on isoelectric points as alpha, beta, and gamma. Muscle Specific Actin includes those of the alpha and gamma isotypes. Skeletal, smooth, and cardiac muscle cells will all stain positively with Anti-Muscle Specific Actin, but mesenchymal cells, not including myoepithelium, will stain negatively. Normal and neoplastic non-muscle cells, including vascular endothelial and connective tissues, carcinomas, melanomas, and lymphomas, will also be negative for muscle specific actin. The use of Anti-Muscle Specific Actin in concert with Anti-Smooth Muscle Actin can allow for differentiation between rhabdomyosarcoma and leiomyosarcoma, as muscle specific actin is found in rhabdomyoblasts, while smooth muscle actin is found in leiomyosarcomas.

APPLICATION

To ensure optimal assay performance, AREX recommends conducting reagent titration tailored to each testing system for optimal detection results.

Application	IHC
Dilution Ratio	1:100-1:200

*Results are sample-specific. Please refer to your local assay conditions and test parameters for reference.

PRODUCT OVERVIEW

Antibody Type	Primary antibodies
Isotype	IgG1
Positive Control	Heart, Skeletal Muscle
Localization	Cytoplasmic
Form / Buffer	Tris Buffer, pH 7.3 - 7.7, with 1% BSA and <0.1% Sodium Azide
Purification	Purified
Conjugation	Unconjugated
Gene Symbol	ACTA1 / ACTC1
Entrez Gene ID	58 / 70
Uniprot	P68133 / P68032
Alternative Names	HHF35 clone, Muscle alpha-actin

*AREX continuously optimizes our products. Webpage content may not reflect the latest updates. For inquiries, please contact info@arexbio.com or your local distributor.

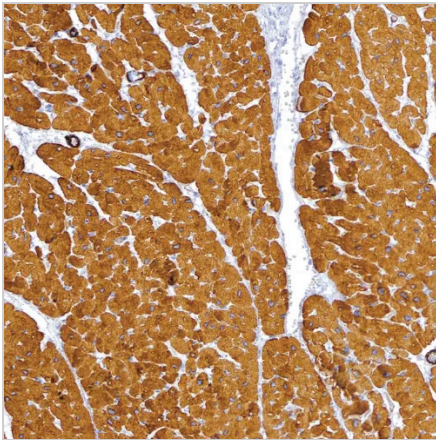
*Clone Number, Reactivity, Source/Host and Clonality can be found in the product name and Key Features section above.

DATASHEET**Actin, Muscle Specific Mouse Monoclonal Antibody (ARM918)**

CAT. NO. ARM6708

STORAGE

Store at 4°C short term. For long term storage, store at -20°C, avoiding freeze/thaw cycles.

DATA

Immunohistochemical staining of human heart tissue using Actin, Muscle Specific Mouse Monoclonal Antibody (ARM918).

RESEARCH USE ONLY

For Research Use Only. Not for diagnostic, therapeutics, prophylactic or in vivo use.

More information: [www.arexbio.com / actin,-muscle-specific-mouse-monoclonal-antibody-arm918-arm6708](http://www.arexbio.com/actin,-muscle-specific-mouse-monoclonal-antibody-arm918-arm6708)