

## DATASHEET

# ALK Mouse Monoclonal Antibody (ARM921)

CAT. NO. ARM6711

### KEY FEATURES

Target	ALK	Clone ID	ARM921
Source / Host	Mouse	Reactivity	Human
Applications	IHC	Dilution	1:100-1:200
Clonality	Monoclonal	Storage	-20°C

### BACKGROUND

Anaplastic Lymphoma Kinase (ALK) is a receptor tyrosine kinase which plays a role in brain and nervous system development. ALK is typically expressed at low levels in regions of the developing central and peripheral nervous system, such as the neonatal brain and spinal cord. The most common genetic alterations of this gene are chromosomal translocations, which result in multiple ALK fusion proteins that are involved in tumourigenesis, as in the case of anaplastic large cell lymphoma (ALCL), lung adenocarcinoma, and inflammatory myofibroblastic tumours. Aberrant ALK expression is also found in other tumours such as familial neuroblastoma, non-small cell lung carcinoma (NSCLC), and brain cancers.

### APPLICATION

To ensure optimal assay performance, AREX recommends conducting reagent titration tailored to each testing system for optimal detection results.

Application	IHC
Dilution Ratio	1:100-1:200

\*Results are sample-specific. Please refer to your local assay conditions and test parameters for reference.

### PRODUCT OVERVIEW

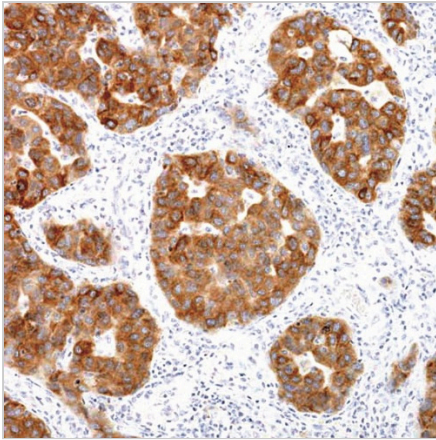
Antibody Type	Primary antibodies
Isotype	IgG2b
Positive Control	Anaplastic Large Cell Lymphoma
Localization	Cytoplasmic, Nuclear
Form / Buffer	Tris Buffer, pH 7.3 - 7.7, with 1% BSA and <0.1% Sodium Azide
Purification	Purified
Conjugation	Unconjugated
Gene Symbol	ALK
Entrez Gene ID	238
Uniprot	Q9UM73
Alternative Names	Anaplastic lymphoma kinase, CD246

\*AREX continuously optimizes our products. Webpage content may not reflect the latest updates. For inquiries, please contact [info@arexbio.com](mailto:info@arexbio.com) or your local distributor.

\*Clone Number, Reactivity, Source/Host and Clonality can be found in the product name and Key Features section above.

**DATASHEET****ALK Mouse Monoclonal Antibody (ARM921)****CAT. NO. ARM6711****| STORAGE**

Store at 4°C short term. For long term storage, store at -20°C, avoiding freeze/thaw cycles.

**| DATA**

Immunohistochemical staining of human adenocarcinoma tissue using ALK Mouse Monoclonal Antibody (ARM921).

**| RESEARCH USE ONLY**

For Research Use Only. Not for diagnostic, therapeutics, prophylactic or in vivo use.

More information: [www.arexbio.com / alk-mouse-monoclonal-antibody-arm921-arm6711](http://www.arexbio.com/alk-mouse-monoclonal-antibody-arm921-arm6711)