

DATASHEET

Alpha-Fetoprotein Mouse Monoclonal Antibody (ARM922)

CAT. NO. ARM6712

KEY FEATURES

Target	Alpha-Fetoprotein	Clone ID	ARM922
Source / Host	Mouse	Reactivity	Human
Applications	IHC	Dilution	1:100-1:200
Clonality	Monoclonal	Storage	-20°C

BACKGROUND

Alpha-Fetoprotein (AFP) is a major plasma glycoprotein seen in hepatocytes of fetal liver and in hepatoma. Elevated levels of AFP in adult serum may be indicative of hepatocellular carcinoma, hepatoid adenocarcinoma, germ cell tumours, or yolk sac tumours. In hepatocellular carcinoma, AFP expression usually indicates malignancy in a hepatocellular nodule and hepatic histogenesis of a malignancy.

APPLICATION

To ensure optimal assay performance, AREX recommends conducting reagent titration tailored to each testing system for optimal detection results.

Application	IHC
Dilution Ratio	1:100-1:200

*Results are sample-specific. Please refer to your local assay conditions and test parameters for reference.

PRODUCT OVERVIEW

Antibody Type	Primary antibodies
Isotype	IgG
Positive Control	Hepatocellular Carcinoma
Localization	Cytoplasmic
Form / Buffer	Tris Buffer, pH 7.3 - 7.7, with 1% BSA and <0.1% Sodium Azide
Purification	Purified
Conjugation	Unconjugated
Gene Symbol	AFP
Entrez Gene ID	174
Uniprot	P02771
Alternative Names	AFP

*AREX continuously optimizes our products. Webpage content may not reflect the latest updates. For inquiries, please contact info@arexbio.com or your local distributor.

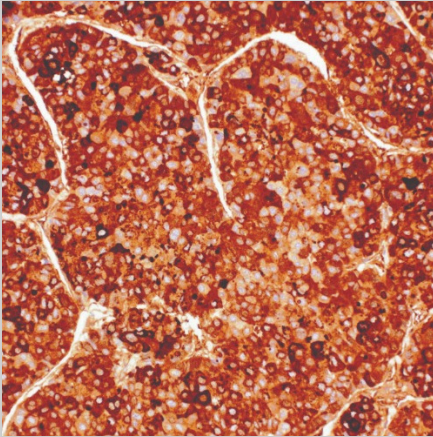
*Clone Number, Reactivity, Source/Host and Clonality can be found in the product name and Key Features section above.

DATASHEET**Alpha-Fetoprotein Mouse Monoclonal Antibody (ARM922)**

CAT. NO. ARM6712

STORAGE

Store at 4°C short term. For long term storage, store at -20°C, avoiding freeze/thaw cycles.

DATA

Immunohistochemical staining of human hepatocellular carcinoma tissue using Alpha-Fetoprotein Mouse Monoclonal Antibody (ARM922).

RESEARCH USE ONLY

For Research Use Only. Not for diagnostic, therapeutics, prophylactic or in vivo use.

More information: [www.arexbio.com / alpha-fetoprotein-mouse-monoclonal-antibody-arm922-arm6712](http://www.arexbio.com/alpha-fetoprotein-mouse-monoclonal-antibody-arm922-arm6712)