

## DATASHEET

# Androgen Receptor Rabbit Monoclonal Antibody (ARM923)

CAT. NO. ARM6713

### KEY FEATURES

Target	Androgen Receptor	Clone ID	ARM923
Source / Host	Rabbit	Reactivity	Human
Applications	IHC	Dilution	1:100-1:200
Clonality	Monoclonal	Storage	-20°C

### BACKGROUND

Androgen Receptor (AR) is a transcriptional regulator with a broad array of functions. This marker is clinically significant in the understanding of tumour progression and tumour aggressiveness. The detection of AR by immunohistochemical staining is important for diagnosis of all types of prostate carcinoma, including both therapy-responsive and therapy-unresponsive disease states. Co-testing with AR and CK20 is used for differential diagnosis of desmoplastic trichoepithelioma (DTE) [CK20+/AR-], morpheaform basal cell carcinoma (BCC) [CK20-/AR+], and microcystic adnexal carcinoma (MAC) [CK20-/AR-].

### APPLICATION

To ensure optimal assay performance, AREX recommends conducting reagent titration tailored to each testing system for optimal detection results.

Application	IHC
Dilution Ratio	1:100-1:200

\*Results are sample-specific. Please refer to your local assay conditions and test parameters for reference.

### PRODUCT OVERVIEW

Antibody Type	Primary antibodies
Isotype	IgG
Positive Control	Prostate Carcinoma
Localization	Nuclear
Form / Buffer	Tris Buffer, pH 7.3 - 7.7, with 1% BSA and <0.1% Sodium Azide
Purification	Purified
Conjugation	Unconjugated
Gene Symbol	AR
Entrez Gene ID	367
Uniprot	P10275
Alternative Names	DHTR; NR3C4; Androgen receptor; Dihydrotestosterone receptor; Nuclear receptor subfamily 3 group C member 4

\*AREX continuously optimizes our products. Webpage content may not reflect the latest updates. For inquiries, please contact [info@arexbio.com](mailto:info@arexbio.com) or your local distributor.

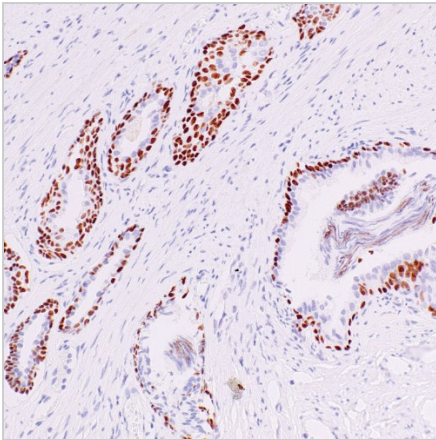
\*Clone Number, Reactivity, Source/Host and Clonality can be found in the product name and Key Features section above.

**DATASHEET****Androgen Receptor Rabbit Monoclonal Antibody (ARM923)**

CAT. NO. ARM6713

**STORAGE**

Store at 4°C short term. For long term storage, store at -20°C, avoiding freeze/thaw cycles.

**DATA**

Immunohistochemical staining of human prostate cancer tissue using Androgen Receptor Rabbit Monoclonal Antibody (ARM923).

**RESEARCH USE ONLY**

For Research Use Only. Not for diagnostic, therapeutics, prophylactic or in vivo use.

More information: [www.arexbio.com / androgen-receptor-mouse-monoclonal-antibody-arm923-arm6713](http://www.arexbio.com/androgen-receptor-mouse-monoclonal-antibody-arm923-arm6713)