

DATASHEET

Arginase-1 (ARG1) Rabbit Monoclonal Antibody (ARM925)

CAT. NO. ARM6715

KEY FEATURES

Target	Arginase-1 (ARG1)	Clone ID	ARM925
Source / Host	Rabbit	Reactivity	Human
Applications	IHC	Dilution	1:100-1:200
Clonality	Monoclonal	Storage	-20°C

BACKGROUND

Arginase-1 (ARG-1) is involved in the urea cycle in liver, catalyzing the conversion of L-arginine into L-ornithine and urea. It is a highly specific and sensitive marker of benign and hepatocellular carcinoma (HCC).

APPLICATION

To ensure optimal assay performance, AREX recommends conducting reagent titration tailored to each testing system for optimal detection results.

Application	IHC
Dilution Ratio	1:100-1:200

*Results are sample-specific. Please refer to your local assay conditions and test parameters for reference.

PRODUCT OVERVIEW

Antibody Type	Primary antibodies
Isotype	IgG
Positive Control	Hepatocellular Carcinoma
Localization	Nuclear, Cytoplasmic
Form / Buffer	Tris Buffer, pH 7.3 - 7.7, with 1% BSA and <0.1% Sodium Azide
Purification	Purified
Conjugation	Unconjugated
Gene Symbol	ARG1
Entrez Gene ID	383
Uniprot	P05089
Alternative Names	Liver arginase

*AREX continuously optimizes our products. Webpage content may not reflect the latest updates. For inquiries, please contact info@arexbio.com or your local distributor.

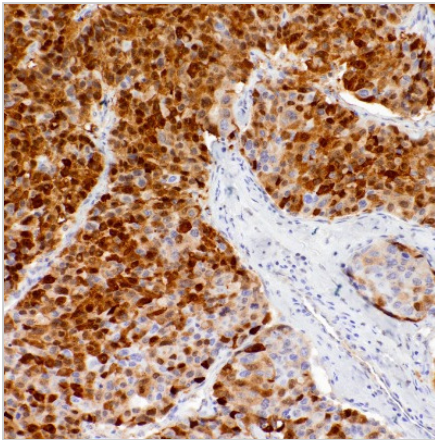
*Clone Number, Reactivity, Source/Host and Clonality can be found in the product name and Key Features section above.

DATASHEET**Arginase-1 (ARG1) Rabbit Monoclonal Antibody (ARM925)**

CAT. NO. ARM6715

STORAGE

Store at 4°C short term. For long term storage, store at -20°C, avoiding freeze/thaw cycles.

DATA

Immunohistochemical staining of human hepatocellular carcinoma tissue using Arginase-1 (ARG1) Rabbit Monoclonal Antibody (ARM925).

RESEARCH USE ONLY

For Research Use Only. Not for diagnostic, therapeutics, prophylactic or in vivo use.

More information: [www.arexbio.com / arginase-1-\(arg1\)-mouse-monoclonal-antibody-arm925-arm6715](http://www.arexbio.com/arginase-1-(arg1)-mouse-monoclonal-antibody-arm925-arm6715)