

DATASHEET

BCA-225 Mouse Monoclonal Antibody (ARM926)

CAT. NO. ARM6716

KEY FEATURES

Target	BCA-225	Clone ID	ARM926
Source / Host	Mouse	Reactivity	Human
Applications	IHC	Dilution	1:100-1:200
Clonality	Monoclonal	Storage	-20°C

BACKGROUND

BCA-225 is a unique glycoprotein linked to breast carcinoma. Unlike other antibodies against breast carcinoma, Anti BCA-225 does not stain benign or malignant pancreas, stomach, colon, prostate, thyroid, parotid, or liver tissues, but can stain lung, endometrium, and ovarian adenocarcinomas.

APPLICATION

To ensure optimal assay performance, AREX recommends conducting reagent titration tailored to each testing system for optimal detection results.

Application	IHC
Dilution Ratio	1:100-1:200

*Results are sample-specific. Please refer to your local assay conditions and test parameters for reference.

PRODUCT OVERVIEW

Antibody Type	Primary antibodies
Isotype	IgG1
Positive Control	Breast Carcinoma
Localization	Cytoplasmic
Form / Buffer	Tris Buffer, pH 7.3 - 7.7, with 1% BSA and <0.1% Sodium Azide
Purification	Purified
Conjugation	Unconjugated
Gene Symbol	MUC1 related
Entrez Gene ID	4582
Uniprot	P15941
Alternative Names	Breast carcinoma-associated antigen (BRST-1)

*AREX continuously optimizes our products. Webpage content may not reflect the latest updates. For inquiries, please contact info@arexbio.com or your local distributor.

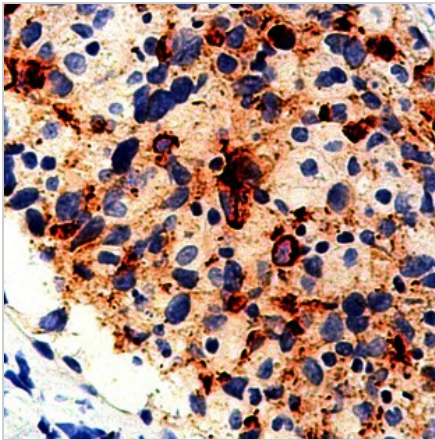
*Clone Number, Reactivity, Source/Host and Clonality can be found in the product name and Key Features section above.

DATASHEET**BCA-225 Mouse Monoclonal Antibody (ARM926)**

CAT. NO. ARM6716

STORAGE

Store at 4°C short term. For long term storage, store at -20°C, avoiding freeze/thaw cycles.

DATA

Immunohistochemical staining of human breast cancer tissue using BCA-225 Mouse Monoclonal Antibody (ARM926).

RESEARCH USE ONLY

For Research Use Only. Not for diagnostic, therapeutics, prophylactic or in vivo use.

More information: [www.arexbio.com / bca-225-mouse-monoclonal-antibody-arm926-arm6716](http://www.arexbio.com/bca-225-mouse-monoclonal-antibody-arm926-arm6716)