

DATASHEET

BCL6 Mouse Monoclonal Antibody (ARM927)

CAT. NO. ARM6717

KEY FEATURES

Target	BCL6	Clone ID	ARM927
Source / Host	Mouse	Reactivity	Human
Applications	IHC	Dilution	1:100-1:200
Clonality	Monoclonal	Storage	-20°C

BACKGROUND

B-Cell Lymphoma 6 (BCL6) is a zinc finger transcription factor. BCL6 expression is seen in follicular lymphomas, Burkitt's lymphoma, angioimmunoblastic T-cell lymphoma, and nodular lymphocyte-predominant Hodgkin's lymphoma. Together with BCL2, BCL6 is often used to distinguish neoplastic follicles from those in benign hyperplasia, and to aid in the classification of mantle cell lymphomas and nodular lymphocyte-predominant Hodgkin's lymphoma.

APPLICATION

To ensure optimal assay performance, AREX recommends conducting reagent titration tailored to each testing system for optimal detection results.

Application	IHC
Dilution Ratio	1:100-1:200

*Results are sample-specific. Please refer to your local assay conditions and test parameters for reference.

PRODUCT OVERVIEW

Antibody Type	Primary antibodies
Isotype	IgG2b
Positive Control	Tonsil
Localization	Nuclear
Form / Buffer	Tris Buffer, pH 7.3 - 7.7, with 1% BSA and <0.1% Sodium Azide
Purification	Purified
Conjugation	Unconjugated
Gene Symbol	BCL6
Entrez Gene ID	604
Uniprot	P41182
Alternative Names	BCL5; LAZ3; ZBTB27; ZNF51; B-cell lymphoma 6 protein; BCL-6; B-cell lymphoma 5 protein; BCL-5; Protein LAZ-3; Zinc finger and BTB domain-containing protein 27; Zinc finger protein 51

*AREX continuously optimizes our products. Webpage content may not reflect the latest updates. For inquiries, please contact info@arexbio.com or your local distributor.

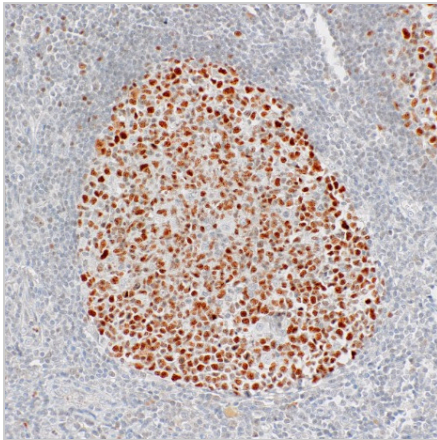
*Clone Number, Reactivity, Source/Host and Clonality can be found in the product name and Key Features section above.

DATASHEET**BCL6 Mouse Monoclonal Antibody (ARM927)**

CAT. NO. ARM6717

STORAGE

Store at 4°C short term. For long term storage, store at -20°C, avoiding freeze/thaw cycles.

DATA

Immunohistochemical staining of human tonsil tissue using BCL6 Mouse Monoclonal Antibody (ARM927).

RESEARCH USE ONLY

For Research Use Only. Not for diagnostic, therapeutics, prophylactic or in vivo use.

More information: [www.arexbio.com / bcl6-mouse-monoclonal-antibody-arm927-arm6717](http://www.arexbio.com/bcl6-mouse-monoclonal-antibody-arm927-arm6717)