

## DATASHEET

# BG8, Lewis<sup>y</sup> Mouse Monoclonal Antibody (ARM929)

CAT. NO. ARM6719

### KEY FEATURES

|               |                         |            |             |
|---------------|-------------------------|------------|-------------|
| Target        | BG8, Lewis <sup>y</sup> | Clone ID   | ARM929      |
| Source / Host | Mouse                   | Reactivity | Human       |
| Applications  | IHC                     | Dilution   | 1:100-1:200 |
| Clonality     | Monoclonal              | Storage    | -20°C       |

### BACKGROUND

BG8 Lewis y, also known as Lewis Blood Antigen or simply BG8, is a blood group antigen that has been identified in many studies as a potential marker for differentiation between pulmonary adenocarcinoma (PACA) and epithelioid mesothelioma (EM). It has been reported that sensitivity of non-mesothelial antigens for adenocarcinoma is organ-dependent. When attempting to differentiate epithelioid mesothelioma from adenocarcinoma, BG8 Lewis y performed at a sensitivity of 98% in the breast cancer group, and 100% in the lung cancer group.

### APPLICATION

To ensure optimal assay performance, AREX recommends conducting reagent titration tailored to each testing system for optimal detection results.

|                |             |
|----------------|-------------|
| Application    | IHC         |
| Dilution Ratio | 1:100-1:200 |

\*Results are sample-specific. Please refer to your local assay conditions and test parameters for reference.

### PRODUCT OVERVIEW

|                   |   |
|-------------------|---|
| Antibody Type     | Primary antibodies  |
| Isotype           | IgG1, kappa   |
| Positive Control  | Lung Adenocarcinoma   |
| Localization      | Cytoplasmic   |
| Form / Buffer     | Tris Buffer, pH 7.3 - 7.7, with 1% BSA and <0.1% Sodium Azide |
| Purification      | Purified  |
| Conjugation       | Unconjugated  |
| Gene Symbol       | FUT3 / FUT5   |
| Entrez Gene ID    | 2525 / 2527   |
| Uniprot           | P21217 / Q11128   |
| Alternative Names | Lewis Y Antigen, Blood Group Antigen Lewis Y                  |

\*AREX continuously optimizes our products. Webpage content may not reflect the latest updates. For inquiries, please contact [info@arexbio.com](mailto:info@arexbio.com) or your local distributor.

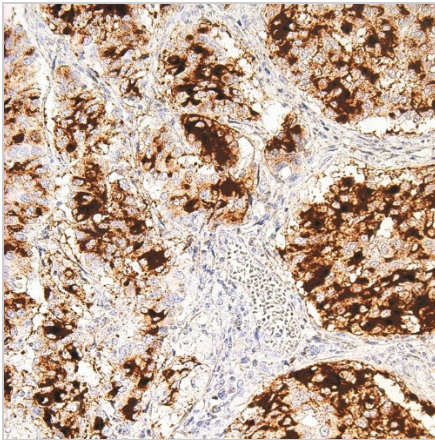
\*Clone Number, Reactivity, Source/Host and Clonality can be found in the product name and Key Features section above.

**DATASHEET****BG8, Lewis<sup>^y^</sup> Mouse Monoclonal Antibody (ARM929)**

CAT. NO. ARM6719

**STORAGE**

Store at 4°C short term. For long term storage, store at -20°C, avoiding freeze/thaw cycles.

**DATA**

Immunohistochemical staining of human lung cancer tissue using BG8, LewisY Mouse Monoclonal Antibody (ARM929).

**RESEARCH USE ONLY**

For Research Use Only. Not for diagnostic, therapeutics, prophylactic or in vivo use.

More information: [www.arexbio.com / bg8,-lewis<sup>^y^</sup>-mouse-monoclonal-antibody-arm929-arm6719](http://www.arexbio.com/bg8,-lewis^y^-mouse-monoclonal-antibody-arm929-arm6719)