

DATASHEET

BSEP Mouse Monoclonal Antibody (ARM930)

CAT. NO. ARM6720

KEY FEATURES

Target	BSEP	Clone ID	ARM930
Source / Host	Mouse	Reactivity	Human
Applications	IHC	Dilution	1:100-1:200
Clonality	Monoclonal	Storage	-20°C

BACKGROUND

Bile Salt Export Pump (BSEP) is a member of the ATP-binding cassette (ABC) transporters, and mediates the transport of bile acid, taurocholate, and other cholates conjugates across the hepatocyte canalicular membrane into the canaliculus. BSEP is associated with progressive familial intrahepatic cholestasis type 2 (PFIC2) and benign recurrent intrahepatic cholestasis type 2 (BRIC2). PFIC2 caused by mutations in the BSEP gene increases the risk of hepatocellular carcinoma in early life.

APPLICATION

To ensure optimal assay performance, AREX recommends conducting reagent titration tailored to each testing system for optimal detection results.

Application	IHC
Dilution Ratio	1:100-1:200

*Results are sample-specific. Please refer to your local assay conditions and test parameters for reference.

PRODUCT OVERVIEW

Antibody Type	Primary antibodies
Isotype	IgG
Positive Control	Liver tissues
Localization	Membranous
Form / Buffer	Tris Buffer, pH 7.3 - 7.7, with 1% BSA and <0.1% Sodium Azide
Purification	Purified
Conjugation	Unconjugated
Gene Symbol	ABCB11
Entrez Gene ID	8647
Uniprot	O95342
Alternative Names	BSEP; Bile salt export pump; ATP-binding cassette sub-family B member 11

*AREX continuously optimizes our products. Webpage content may not reflect the latest updates. For inquiries, please contact info@arexbio.com or your local distributor.

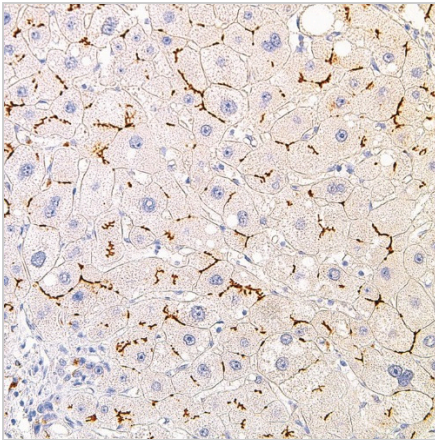
*Clone Number, Reactivity, Source/Host and Clonality can be found in the product name and Key Features section above.

DATASHEET**BSEP Mouse Monoclonal Antibody (ARM930)**

CAT. NO. ARM6720

STORAGE

Store at 4°C short term. For long term storage, store at -20°C, avoiding freeze/thaw cycles.

DATA

Immunohistochemical staining of human liver tissue using BSEP Mouse Monoclonal Antibody (ARM930).

RESEARCH USE ONLY

For Research Use Only. Not for diagnostic, therapeutics, prophylactic or in vivo use.

More information: [www.arexbio.com / bsep-mouse-monoclonal-antibody-arm930-arm6720](http://www.arexbio.com/bsep-mouse-monoclonal-antibody-arm930-arm6720)