

DATASHEET

CA-125 Mouse Monoclonal Antibody (ARM931)

CAT. NO. ARM6721

KEY FEATURES

Target	CA-125	Clone ID	ARM931
Source / Host	Mouse	Reactivity	Human
Applications	IHC	Dilution	1:100-1:200
Clonality	Monoclonal	Storage	-20°C

BACKGROUND

CA-125 is normally found in epithelial cells of Fallopian tube, endometrium and endocervix, pancreas, colon, gall bladder, stomach, kidney, apocrine sweat gland, mammary gland, and mesothelial cell lining of pleura, pericardium, and the peritoneum. Anti-CA-125 reacts positively with ovarian malignancies, cervical carcinoma, seminal vesicle carcinoma, anaplastic lymphoma, and endometrial and bladder adenocarcinoma.

APPLICATION

To ensure optimal assay performance, AREX recommends conducting reagent titration tailored to each testing system for optimal detection results.

Application	IHC
Dilution Ratio	1:100-1:200

*Results are sample-specific. Please refer to your local assay conditions and test parameters for reference.

PRODUCT OVERVIEW

Antibody Type	Primary antibodies
Isotype	IgG1
Positive Control	Ovarian Serous Carcinoma
Localization	Cytoplasmic
Form / Buffer	Tris Buffer, pH 7.3 - 7.7, with 1% BSA and <0.1% Sodium Azide
Purification	Purified
Conjugation	Unconjugated
Gene Symbol	MUC16
Entrez Gene ID	94025
Uniprot	Q8WXI7
Alternative Names	Cancer antigen 125, Mucin-16

*AREX continuously optimizes our products. Webpage content may not reflect the latest updates. For inquiries, please contact info@arexbio.com or your local distributor.

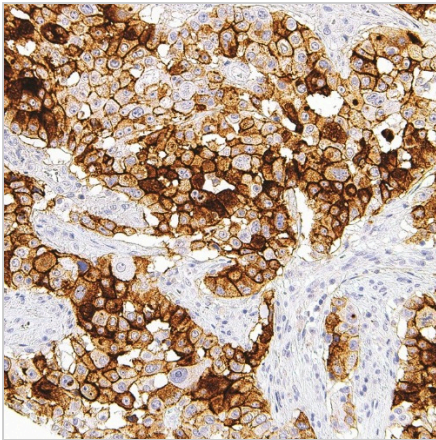
*Clone Number, Reactivity, Source/Host and Clonality can be found in the product name and Key Features section above.

DATASHEET**CA-125 Mouse Monoclonal Antibody (ARM931)**

CAT. NO. ARM6721

STORAGE

Store at 4°C short term. For long term storage, store at -20°C, avoiding freeze/thaw cycles.

DATA

Immunohistochemical staining of human ovarian cancer tissue using CA-125 Mouse Monoclonal Antibody (ARM931).

RESEARCH USE ONLY

For Research Use Only. Not for diagnostic, therapeutics, prophylactic or in vivo use.

More information: [www.arexbio.com / ca-125-mouse-monoclonal-antibody-arm931-arm6721](http://www.arexbio.com/ca-125-mouse-monoclonal-antibody-arm931-arm6721)