

## DATASHEET

# Caldesmon Mouse Monoclonal Antibody (ARM934)

CAT. NO. ARM6724

### KEY FEATURES

Target	Caldesmon	Clone ID	ARM934
Source / Host	Mouse	Reactivity	Human
Applications	IHC	Dilution	1:100-1:200
Clonality	Monoclonal	Storage	-20°C

### BACKGROUND

Caldesmon is a marker for smooth muscle differentiation. Found in smooth muscle and other tissues, caldesmon interacts with Ca<sup>2+</sup>-calmodulin, actin, tropomyosin, myosin, and phospholipids. It inhibits the ATPase activity of myosin in smooth muscle, and mediates Ca<sup>2+</sup>-dependent inhibition of smooth muscle and non-muscle contraction. Caldesmon expression is found in Gastrointestinal Stromal Tumours (GIST), and can be used to differentiate epithelioid mesothelioma from serous papillary carcinoma of the ovary. It is also a specific marker for smooth muscle cells (SMC) and associated neoplasms; therefore, Anti-Caldesmon can be used in the study of the SMC differentiation process as well as the differentiation of other tumours with SMC-like differentiation, including leiomyosarcoma and myofibroblastic tumours.

### APPLICATION

To ensure optimal assay performance, AREX recommends conducting reagent titration tailored to each testing system for optimal detection results.

Application	IHC
Dilution Ratio	1:100-1:200

\*Results are sample-specific. Please refer to your local assay conditions and test parameters for reference.

### PRODUCT OVERVIEW

Antibody Type	Primary antibodies
Isotype	IgG2b
Positive Control	Appendix
Localization	Cytoplasmic
Form / Buffer	Tris Buffer, pH 7.3 - 7.7, with 1% BSA and <0.1% Sodium Azide
Purification	Purified
Conjugation	Unconjugated
Gene Symbol	CALD1
Entrez Gene ID	800
Uniprot	Q05682
Alternative Names	CAD; CDM; Caldesmon; CDM

\*AREX continuously optimizes our products. Webpage content may not reflect the latest updates. For inquiries, please contact [info@arexbio.com](mailto:info@arexbio.com) or your local distributor.

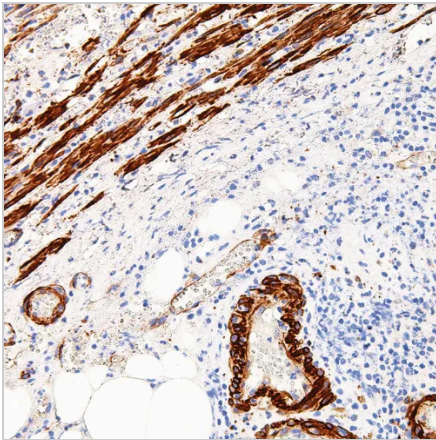
\*Clone Number, Reactivity, Source/Host and Clonality can be found in the product name and Key Features section above.

**DATASHEET****Caldesmon Mouse Monoclonal Antibody (ARM934)**

CAT. NO. ARM6724

**STORAGE**

Store at 4°C short term. For long term storage, store at -20°C, avoiding freeze/thaw cycles.

**DATA**

Immunohistochemical staining of human appendix tissue using Caldesmon Mouse Monoclonal Antibody (ARM934).

**RESEARCH USE ONLY**

For Research Use Only. Not for diagnostic, therapeutics, prophylactic or in vivo use.

More information: [www.arexbio.com / caldesmon-mouse-monoclonal-antibody-arm934-arm6724](http://www.arexbio.com/caldesmon-mouse-monoclonal-antibody-arm934-arm6724)