

DATASHEET

Calponin Mouse Monoclonal Antibody (ARM935)

CAT. NO. ARM6725

KEY FEATURES

Target	Calponin	Clone ID	ARM935
Source / Host	Mouse	Reactivity	Human
Applications	IHC	Dilution	1:100-1:200
Clonality	Monoclonal	Storage	-20°C

BACKGROUND

Calponin is an actin, tropomyosin and calmodulin-binding protein that involves in the regulation of smooth muscle contraction. This antibody is mainly used for the diagnosis and research of myoepithelial cells in leiomyoma and breast lesions.

APPLICATION

To ensure optimal assay performance, AREX recommends conducting reagent titration tailored to each testing system for optimal detection results.

Application	IHC
Dilution Ratio	1:100-1:200

*Results are sample-specific. Please refer to your local assay conditions and test parameters for reference.

PRODUCT OVERVIEW

Antibody Type	Primary antibodies
Isotype	IgG1
Positive Control	Breast
Localization	Cytoplasmic
Form / Buffer	Tris Buffer, pH 7.3 - 7.7, with 1% BSA and <0.1% Sodium Azide
Purification	Purified
Conjugation	Unconjugated
Gene Symbol	CNN1
Entrez Gene ID	1264
Uniprot	P51911
Alternative Names	Calponin-1, Basic calponin

*AREX continuously optimizes our products. Webpage content may not reflect the latest updates. For inquiries, please contact info@arexbio.com or your local distributor.

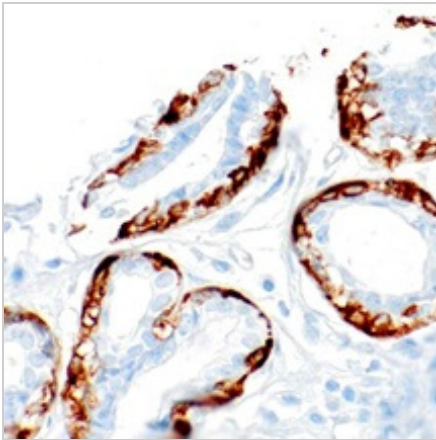
*Clone Number, Reactivity, Source/Host and Clonality can be found in the product name and Key Features section above.

DATASHEET**Calponin Mouse Monoclonal Antibody (ARM935)**

CAT. NO. ARM6725

STORAGE

Store at 4°C short term. For long term storage, store at -20°C, avoiding freeze/thaw cycles.

DATA

Immunohistochemical staining of human breast tissue using Calponin Mouse Monoclonal Antibody (ARM935).

RESEARCH USE ONLY

For Research Use Only. Not for diagnostic, therapeutics, prophylactic or in vivo use.

More information: www.arexbio.com/calponin-mouse-monoclonal-antibody-arm935-arm6725