

## DATASHEET

# CD14 Rabbit Monoclonal Antibody (ARM937)

CAT. NO. ARM6727

### KEY FEATURES

Target	CD14	Clone ID	ARM937
Source / Host	Rabbit	Reactivity	Human
Applications	IHC	Dilution	1:100-1:200
Clonality	Monoclonal	Storage	-20°C

### BACKGROUND

Cluster of Differentiation 14 (CD14) is a macrophage-derived monocyte marker that stains granulocytes, endothelial and epithelial cells, placental trophoblasts, and the red pulp and marginal zone cells of the spleen. In lymph nodes, sinusoidal histiocytes and follicular dendritic cells stain positively for CD14, while monocyte-derived cells, including macrophages associated with anthracosis and sinusoidal histiocytosis with erythrophagocytosis, stain negatively. High CD14 expression is found in histiocytes with Diffuse Large B-Cell Lymphoma (DLBCL) when compared to Chronic Lymphocytic Leukemia (CLL)/Small Lymphocytic Lymphoma (SLL), Mantle Cell Lymphoma (MCL), or Follicular Lymphoma (FL). CD14 is also valuable for differentiating between acute monocytic leukemia, myeloproliferative neoplasms, and myelodysplastic syndrome.

### APPLICATION

To ensure optimal assay performance, AREX recommends conducting reagent titration tailored to each testing system for optimal detection results.

Application	IHC
Dilution Ratio	1:100-1:200

\*Results are sample-specific. Please refer to your local assay conditions and test parameters for reference.

### PRODUCT OVERVIEW

Antibody Type	Primary antibodies
Isotype	IgG
Positive Control	Tonsil, Lymph Node, Appendix, Myeloid Leukemia
Localization	Cytoplasmic, Membranous
Form / Buffer	Tris Buffer, pH 7.3 - 7.7, with 1% BSA and <0.1% Sodium Azide
Purification	Purified
Conjugation	Unconjugated
Gene Symbol	CD14
Entrez Gene ID	929
Uniprot	P08571
Alternative Names	Monocyte differentiation antigen CD14; Myeloid cell-specific leucine-rich glycoprotein; CD14

\*AREX continuously optimizes our products. Webpage content may not reflect the latest updates. For inquiries, please contact [info@arexbio.com](mailto:info@arexbio.com) or your local distributor.

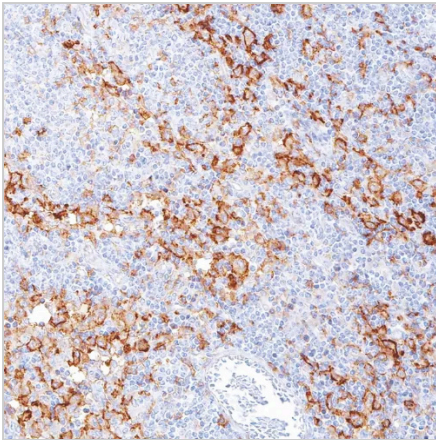
\*Clone Number, Reactivity, Source/Host and Clonality can be found in the product name and Key Features section above.

**DATASHEET****CD14 Rabbit Monoclonal Antibody (ARM937)**

CAT. NO. ARM6727

**STORAGE**

Store at 4°C short term. For long term storage, store at -20°C, avoiding freeze/thaw cycles.

**DATA**

Immunohistochemical staining of human lymph node tissue using CD14 Rabbit Monoclonal Antibody (ARM937).

**RESEARCH USE ONLY**

For Research Use Only. Not for diagnostic, therapeutics, prophylactic or in vivo use.

More information: [www.arexbio.com / cd14-mouse-monoclonal-antibody-arm937-arm6727](http://www.arexbio.com/cd14-mouse-monoclonal-antibody-arm937-arm6727)