

DATASHEET

CD16 Rabbit Monoclonal Antibody (ARM938)

CAT. NO. ARM6728

KEY FEATURES

Target	CD16	Clone ID	ARM938
Source / Host	Rabbit	Reactivity	Human
Applications	IHC	Dilution	1:100-1:200
Clonality	Monoclonal	Storage	-20°C

BACKGROUND

Cluster of Differentiation 16 (CD16) is a receptor on natural killer cells, neutrophils, monocytes, and macrophages. CD16 binds the Fc portion of antibodies to activate these immune cells. CD16 staining is useful in the differential diagnosis of hepatosplenic gamma delta T-cell lymphoma and gamma delta T-cell large granular lymphocyte leukemia from mucosal and cutaneous gamma delta T-cell lymphoma. Likely due to dysgranulopoiesis, granulocytes with myelomonocytic leukemia have decreased CD16 expression in comparison to granulocytes with chronic myelogenous leukemia and control bone marrow biopsies.

APPLICATION

To ensure optimal assay performance, AREX recommends conducting reagent titration tailored to each testing system for optimal detection results.

Application	IHC
Dilution Ratio	1:100-1:200

*Results are sample-specific. Please refer to your local assay conditions and test parameters for reference.

PRODUCT OVERVIEW

Antibody Type	Primary antibodies
Isotype	IgG
Positive Control	Tonsil
Localization	Cytoplasmic, Membranous
Form / Buffer	Tris Buffer, pH 7.3 - 7.7, with 1% BSA and <0.1% Sodium Azide
Purification	Purified
Conjugation	Unconjugated
Gene Symbol	FCGR3A
Entrez Gene ID	2214
Uniprot	P08637
Alternative Names	CD16A; FCG3; FCGR3; IGFR3; Low affinity immunoglobulin gamma Fc region receptor III-A; CD16a antigen; Fc-gamma RIII-alpha; Fc-gamma RIII; Fc-gamma RIIIa; FcRIII; FcRIIIa; FcR-10; IgG Fc receptor III-2; CD16a

*AREX continuously optimizes our products. Webpage content may not reflect the latest updates. For inquiries, please contact info@arexbio.com or your local distributor.

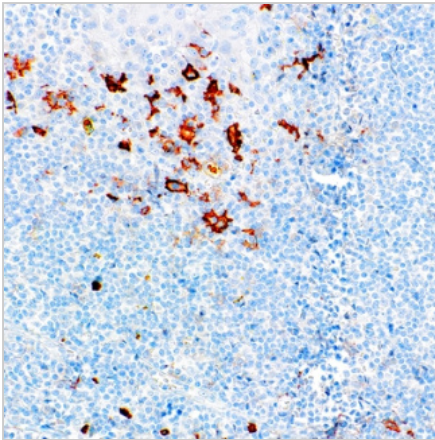
*Clone Number, Reactivity, Source/Host and Clonality can be found in the product name and Key Features section above.

DATASHEET**CD16 Rabbit Monoclonal Antibody (ARM938)**

CAT. NO. ARM6728

STORAGE

Store at 4°C short term. For long term storage, store at -20°C, avoiding freeze/thaw cycles.

DATA

Immunohistochemical staining of human tonsil tissue sections using CD16 Rabbit Monoclonal Antibody (ARM938).

RESEARCH USE ONLY

For Research Use Only. Not for diagnostic, therapeutics, prophylactic or in vivo use.

More information: [www.arexbio.com / cd16-mouse-monoclonal-antibody-arm938-arm6728](http://www.arexbio.com/cd16-mouse-monoclonal-antibody-arm938-arm6728)