

DATASHEET

CD1a Mouse Monoclonal Antibody (ARM940)

CAT. NO. ARM6730

KEY FEATURES

Target	CD1a	Clone ID	ARM940
Source / Host	Mouse	Reactivity	Human
Applications	IHC	Dilution	1:100-1:200
Clonality	Monoclonal	Storage	-20°C

BACKGROUND

CD1a is part of a heterodimer with β -2-microglobulin, and mediates the capture and presentation of antigens, primarily lipid and glycolipid antigens of self or microbial origin, to T-cells. CD1a is expressed on interdigitating and dermal dendritic cells, veiled cells, Langerhans cells, antigen-presenting cells of the lymph nodes, and cortical thymocytes. Anti-CD1a stains Langerhans cell histiocytosis and cortical T LBL/L pre-T lymphoblastic lymphoma and leukemia. In concert with S100 and CD68, CD1a is very useful for differentiating Rosai-Dorfman disease from other histiocytic diseases.

APPLICATION

To ensure optimal assay performance, AREX recommends conducting reagent titration tailored to each testing system for optimal detection results.

Application	IHC
Dilution Ratio	1:100-1:200

*Results are sample-specific. Please refer to your local assay conditions and test parameters for reference.

PRODUCT OVERVIEW

Antibody Type	Primary antibodies
Isotype	IgG1
Positive Control	Skin, Thymus
Localization	Cytoplasmic, Membranous
Form / Buffer	Tris Buffer, pH 7.3 - 7.7, with 1% BSA and <0.1% Sodium Azide
Purification	Purified
Conjugation	Unconjugated
Gene Symbol	CD1A
Entrez Gene ID	909
Uniprot	P06126
Alternative Names	T-cell surface glycoprotein CD1a; T-cell surface antigen T6/Leu-6; hTa1 thymocyte antigen; CD1a

*AREX continuously optimizes our products. Webpage content may not reflect the latest updates. For inquiries, please contact info@arexbio.com or your local distributor.

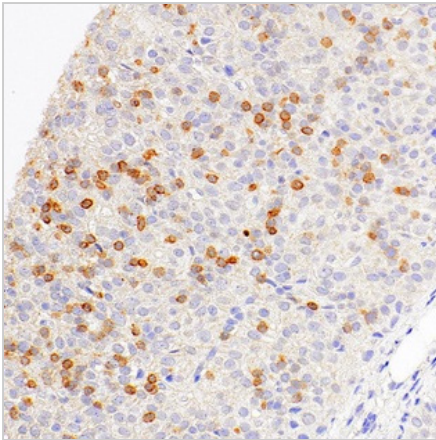
*Clone Number, Reactivity, Source/Host and Clonality can be found in the product name and Key Features section above.

DATASHEET**CD1a Mouse Monoclonal Antibody (ARM940)**

CAT. NO. ARM6730

STORAGE

Store at 4°C short term. For long term storage, store at -20°C, avoiding freeze/thaw cycles.

DATA

Immunohistochemical staining of human thymus tissue using CD1a Mouse Monoclonal Antibody (ARM940).

RESEARCH USE ONLY

For Research Use Only. Not for diagnostic, therapeutics, prophylactic or in vivo use.

More information: [www.arexbio.com / cd1a-mouse-monoclonal-antibody-arm940-arm6730](http://www.arexbio.com/cd1a-mouse-monoclonal-antibody-arm940-arm6730)