

DATASHEET

CD22 Rabbit Monoclonal Antibody (ARM943)

CAT. NO. ARM6733

KEY FEATURES

Target	CD22	Clone ID	ARM943
Source / Host	Rabbit	Reactivity	Human
Applications	IHC	Dilution	1:100-1:200
Clonality	Monoclonal	Storage	-20°C

BACKGROUND

CD22 antigen appears early in B-cell lymphocyte differentiation at approximately the same stage as the CD19 antigen. Mediates B-cell B-cell interactions. May be involved in the localization of B-cells in lymphoid tissues. Binds sialylated glycoproteins; one of which is CD45. Preferentially binds to alpha-2,6-linked sialic acid. The sialic acid recognition site can be masked by cis interactions with sialic acids on the same cell surface. Upon ligand induced tyrosine phosphorylation in the immune response seems to be involved in regulation of B-cell antigen receptor signaling. Plays a role in positive regulation through interaction with Src family tyrosine kinases and may also act as an inhibitory receptor by recruiting cytoplasmic phosphatases via their SH2 domains that block signal transduction through dephosphorylation of signaling molecules. CD22 may be a useful marker for phenotyping mature leukemias, as CD22 membrane expression has been shown to be limited to the late differentiation stages between mature B cells (CD22+) and plasma cells (CD22-). CD22 is also strongly expressed in hairy cell leukemia.

APPLICATION

To ensure optimal assay performance, AREX recommends conducting reagent titration tailored to each testing system for optimal detection results.

Application	IHC
Dilution Ratio	1:100-1:200

*Results are sample-specific. Please refer to your local assay conditions and test parameters for reference.

PRODUCT OVERVIEW

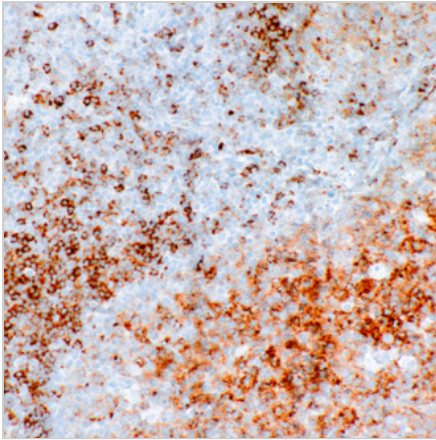
Antibody Type	Primary antibodies
Isotype	IgG
Positive Control	Tonsil
Localization	Membranous / Cytoplasmic
Form / Buffer	Tris Buffer, pH 7.3 - 7.7, with 1% BSA and <0.1% Sodium Azide
Purification	Purified
Conjugation	Unconjugated
Gene Symbol	CD22
Entrez Gene ID	933
Uniprot	P20273
Alternative Names	SIGLEC2; B-cell receptor CD22; B-lymphocyte cell adhesion molecule; BL-CAM; Sialic acid-binding Ig-like lectin 2; Siglec-2; T-cell surface antigen Leu-14; CD22

*AREX continuously optimizes our products. Webpage content may not reflect the latest updates. For inquiries, please contact info@arexbio.com or your local distributor.

*Clone Number, Reactivity, Source/Host and Clonality can be found in the product name and Key Features section above.

DATASHEET**CD22 Rabbit Monoclonal Antibody (ARM943)****CAT. NO. ARM6733****| STORAGE**

Store at 4°C short term. For long term storage, store at -20°C, avoiding freeze/thaw cycles.

| DATA

Immunohistochemical staining of human tonsil tissue using CD22 Rabbit Monoclonal Antibody (ARM943).

| RESEARCH USE ONLY

For Research Use Only. Not for diagnostic, therapeutics, prophylactic or in vivo use.

More information: [www.arexbio.com / cd22-mouse-monoclonal-antibody-arm943-arm6733](http://www.arexbio.com/cd22-mouse-monoclonal-antibody-arm943-arm6733)