

DATASHEET

CD25 Rabbit Monoclonal Antibody (ARM945)

CAT. NO. ARM6735

KEY FEATURES

Target	CD25	Clone ID	ARM945
Source / Host	Rabbit	Reactivity	Human
Applications	IHC	Dilution	1:100-1:200
Clonality	Monoclonal	Storage	-20°C

BACKGROUND

Cluster of Differentiation 25 (CD25) is the extracellular region of the interleukin-2 receptor on activated B- and T-cells, myeloid precursors, and some other types of leukocytes. Since CD25 staining is useful for differentiating neoplastic mast cell aggregates from reactive proliferations, Anti-CD25 has become a major criterion for Systemic Mastocytosis diagnoses. In the context of urticaria pigmentosa, CD25 staining is also used to recognize mast cells in skin biopsies. There is a greater proportion of CD25+ and FOXP3+ regulatory T-cells among cancer cells in tumour parenchyma and its periphery in recurrent cutaneous melanoma compared to non-recurrent melanoma.

APPLICATION

To ensure optimal assay performance, AREX recommends conducting reagent titration tailored to each testing system for optimal detection results.

Application	IHC
Dilution Ratio	1:100-1:200

*Results are sample-specific. Please refer to your local assay conditions and test parameters for reference.

PRODUCT OVERVIEW

Antibody Type	Primary antibodies
Isotype	IgG
Positive Control	Lesions of Mastocytosis
Localization	Cytoplasmic, Membranous
Form / Buffer	Tris Buffer, pH 7.3 - 7.7, with 1% BSA and <0.1% Sodium Azide
Purification	Purified
Conjugation	Unconjugated
Gene Symbol	IL2RA
Entrez Gene ID	3559
Uniprot	P01589
Alternative Names	Interleukin-2 receptor subunit alpha; IL-2 receptor subunit alpha; IL-2-RA; IL-2R subunit alpha; IL2-RA; TAC antigen; p55; CD antigen CD25

*AREX continuously optimizes our products. Webpage content may not reflect the latest updates. For inquiries, please contact info@arexbio.com or your local distributor.

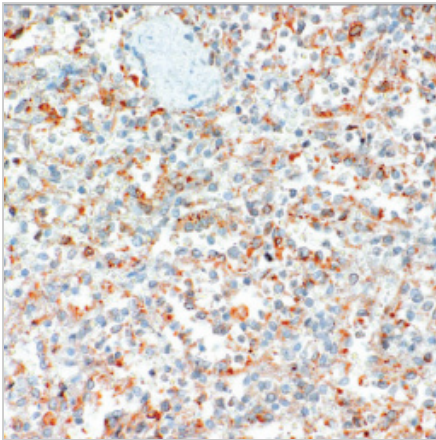
*Clone Number, Reactivity, Source/Host and Clonality can be found in the product name and Key Features section above.

DATASHEET**CD25 Rabbit Monoclonal Antibody (ARM945)**

CAT. NO. ARM6735

STORAGE

Store at 4°C short term. For long term storage, store at -20°C, avoiding freeze/thaw cycles.

DATA

Immunohistochemical staining of human spleen tissue using CD25 Rabbit Monoclonal Antibody (ARM945).

RESEARCH USE ONLY

For Research Use Only. Not for diagnostic, therapeutics, prophylactic or in vivo use.

More information: [www.arexbio.com / cd25-mouse-monoclonal-antibody-arm945-arm6735](http://www.arexbio.com/cd25-mouse-monoclonal-antibody-arm945-arm6735)