

DATASHEET

CK(AE1) Mouse Monoclonal Antibody (ARM964)

CAT. NO. ARM6754

KEY FEATURES

Target	CK(AE1)	Clone ID	ARM964
Source / Host	Mouse	Reactivity	Human
Applications	IHC	Dilution	1:100-1:200
Clonality	Monoclonal	Storage	-20°C

BACKGROUND

Cytokeratin-AE1 is the acidic (Type 1) subfamilies of cytokeratins, and can be used to label tumors for squamous and adenocarcinoma of the lung, liver carcinoma, breast cancer and esophageal cancer.

APPLICATION

To ensure optimal assay performance, AREX recommends conducting reagent titration tailored to each testing system for optimal detection results.

Application	IHC
Dilution Ratio	1:100-1:200

*Results are sample-specific. Please refer to your local assay conditions and test parameters for reference.

PRODUCT OVERVIEW

Antibody Type	Primary antibodies
Isotype	IgG1
Positive Control	Stomach Cancer, Bladder Cancer
Localization	Cytoplasmic
Form / Buffer	Tris Buffer, pH 7.3 - 7.7, with 1% BSA and <0.1% Sodium Azide
Purification	Purified
Conjugation	Unconjugated
Gene Symbol	KRT Type I
Entrez Gene ID	Multiple
Uniprot	Multiple
Alternative Names	Acidic Cytokeratins

*AREX continuously optimizes our products. Webpage content may not reflect the latest updates. For inquiries, please contact info@arexbio.com or your local distributor.

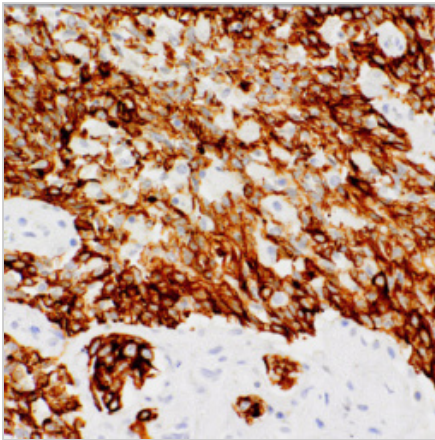
*Clone Number, Reactivity, Source/Host and Clonality can be found in the product name and Key Features section above.

DATASHEET**CK(AE1) Mouse Monoclonal Antibody (ARM964)**

CAT. NO. ARM6754

STORAGE

Store at 4°C short term. For long term storage, store at -20°C, avoiding freeze/thaw cycles.

DATA

Immunohistochemical staining of human bladder tissue using CK(AE1) Mouse Monoclonal Antibody (ARM964).

RESEARCH USE ONLY

For Research Use Only. Not for diagnostic, therapeutics, prophylactic or in vivo use.

More information: [www.arexbio.com / ck\(ae1\)-mouse-monoclonal-antibody-arm964-arm6754](http://www.arexbio.com / ck(ae1)-mouse-monoclonal-antibody-arm964-arm6754)