

DATASHEET

CK(AE3) Mouse Monoclonal Antibody (ARM965)

CAT. NO. ARM6755

KEY FEATURES

Target	CK(AE3)	Clone ID	ARM965
Source / Host	Mouse	Reactivity	Human
Applications	IHC	Dilution	1:100-1:200
Clonality	Monoclonal	Storage	-20°C

BACKGROUND

Cytokeratin-AE3 is the basic (Type II) subfamilies of cytokeratins. It stains broadly with most epithelia and their neoplasms. AE3 detection is used to observe the distribution of keratin-containing cells in normal epithelia and to identify neoplasms derived from such epithelium.

APPLICATION

To ensure optimal assay performance, AREX recommends conducting reagent titration tailored to each testing system for optimal detection results.

Application	IHC
Dilution Ratio	1:100-1:200

*Results are sample-specific. Please refer to your local assay conditions and test parameters for reference.

PRODUCT OVERVIEW

Antibody Type	Primary antibodies
Isotype	IgG1
Positive Control	Colon Cancer, Esophagus
Localization	Cytoplasmic
Form / Buffer	Tris Buffer, pH 7.3 - 7.7, with 1% BSA and <0.1% Sodium Azide
Purification	Purified
Conjugation	Unconjugated
Gene Symbol	KRT Type II
Entrez Gene ID	Multiple
Uniprot	Multiple
Alternative Names	Basic Cytokeratins

*AREX continuously optimizes our products. Webpage content may not reflect the latest updates. For inquiries, please contact info@arexbio.com or your local distributor.

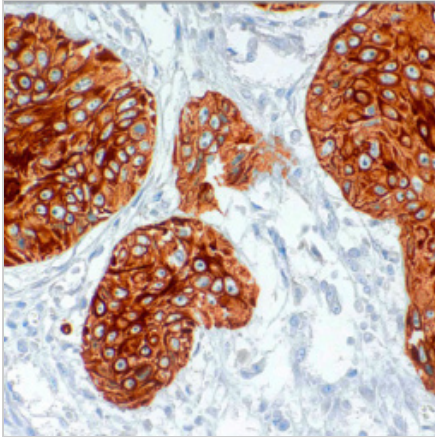
*Clone Number, Reactivity, Source/Host and Clonality can be found in the product name and Key Features section above.

DATASHEET**CK(AE3) Mouse Monoclonal Antibody (ARM965)**

CAT. NO. ARM6755

STORAGE

Store at 4°C short term. For long term storage, store at -20°C, avoiding freeze/thaw cycles.

DATA

Immunohistochemical staining of human esophagus tissue using CK(AE3) Mouse Monoclonal Antibody (ARM965).

RESEARCH USE ONLY

For Research Use Only. Not for diagnostic, therapeutics, prophylactic or in vivo use.

More information: [www.arexbio.com / ck\(ae3\)-mouse-monoclonal-antibody-arm965-arm6755](http://www.arexbio.com / ck(ae3)-mouse-monoclonal-antibody-arm965-arm6755)