

DATASHEET

Clusterin/Apolipoprotein J Rabbit Monoclonal Antibody (ARM966)

CAT. NO. ARM6756

KEY FEATURES

Target	Clusterin/Apolipoprotein J	Clone ID	ARM966
Source / Host	Rabbit	Reactivity	Human
Applications	IHC	Dilution	1:100-1:200
Clonality	Monoclonal	Storage	-20°C

BACKGROUND

Clusterin/Apolipoprotein J is normally found in epithelial cells, semen, plasma, breast milk, cerebrospinal fluid, and urine, and is involved in apoptosis and the clearance of cellular debris. It is present in hematopoietic and non-hematopoietic cancers, as well as most systemic anaplastic large cell lymphomas. Anti-Clusterin/Apolipoprotein J in a panel with other antibodies is useful for differentiating systemic anaplastic large cell lymphoma from classic Hodgkin's disease. Anti-Clusterin/Apolipoprotein J also displays high sensitivity and specificity for follicular dendritic cell tumours. Clusterin overexpression is linked to recurrence and poor prognosis in breast cancer, and chemosensitivity and poor survival in cervical cancer.

APPLICATION

To ensure optimal assay performance, AREX recommends conducting reagent titration tailored to each testing system for optimal detection results.

Application	IHC
Dilution Ratio	1:100-1:200

*Results are sample-specific. Please refer to your local assay conditions and test parameters for reference.

PRODUCT OVERVIEW

Antibody Type	Primary antibodies
Isotype	IgG
Positive Control	Tonsil, Lymph Node, Placenta, Colon, Kidney, Brain and Liver
Localization	Cytoplasmic
Form / Buffer	Tris Buffer, pH 7.3 - 7.7, with 1% BSA and <0.1% Sodium Azide
Purification	Purified
Conjugation	Unconjugated
Gene Symbol	CLU
Entrez Gene ID	1191
Uniprot	P10909
Alternative Names	Apolipoprotein J, CLI, TRPM-2

*AREX continuously optimizes our products. Webpage content may not reflect the latest updates. For inquiries, please contact info@arexbio.com or your local distributor.

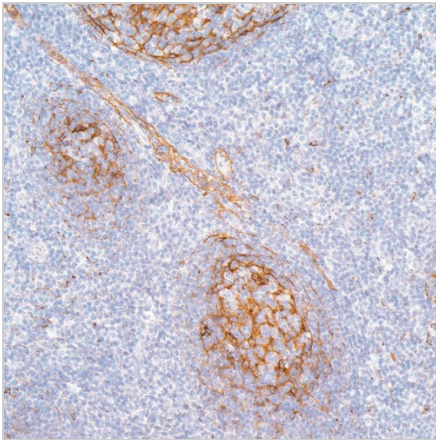
*Clone Number, Reactivity, Source/Host and Clonality can be found in the product name and Key Features section above.

DATASHEET**Clusterin/Apolipoprotein J Rabbit Monoclonal Antibody (ARM966)**

CAT. NO. ARM6756

STORAGE

Store at 4°C short term. For long term storage, store at -20°C, avoiding freeze/thaw cycles.

DATA

Immunohistochemical staining of human tonsil tissue using Clusterin/Apolipoprotein J Rabbit Monoclonal Antibody (ARM966).

RESEARCH USE ONLY

For Research Use Only. Not for diagnostic, therapeutics, prophylactic or in vivo use.

More information: www.arexbio.com / clusterin-apolipoprotein-j-mouse-monoclonal-antibody-arm966-arm6756