

DATASHEET

CMTM6 Mouse Monoclonal Antibody (ARM967)

CAT. NO. ARM6757

KEY FEATURES

| | | | |
|---------------|------------|------------|-------------|
| Target | CMTM6 | Clone ID | ARM967 |
| Source / Host | Mouse | Reactivity | Human |
| Applications | IHC | Dilution | 1:100-1:200 |
| Clonality | Monoclonal | Storage | -20°C |

BACKGROUND

CMTM6, belongs to the chemokine-like factor superfamily, a novel family that is similar to the chemokine and transmembrane 4 superfamilies. CMTM6 stabilizes plasma membrane expression of PD-L1 and protects PD-L1 from lysosomal degradation by preventing STUB1-mediated PD-L1 ubiquitination. Based on the studies of CMTM6 immune system regulation, it is being investigated as an immunotherapeutic target for cancer treatment.

APPLICATION

To ensure optimal assay performance, AREX recommends conducting reagent titration tailored to each testing system for optimal detection results.

| | |
|----------------|-------------|
| Application | IHC |
| Dilution Ratio | 1:100-1:200 |

*Results are sample-specific. Please refer to your local assay conditions and test parameters for reference.

PRODUCT OVERVIEW

| | |
|-------------------|---|
| Antibody Type | Primary antibodies |
| Isotype | IgG1 |
| Positive Control | Tonsil |
| Localization | Cytoplasmic |
| Form / Buffer | Tris Buffer, pH 7.3 - 7.7, with 1% BSA and <0.1% Sodium Azide |
| Purification | Purified |
| Conjugation | Unconjugated |
| Gene Symbol | CMTM6 |
| Entrez Gene ID | 54918 |
| Uniprot | Q9NX76 |
| Alternative Names | CKLFSF6; CKLF-like MARVEL transmembrane domain-containing protein 6; Chemokine-like factor superfamily member 6 |

*AREX continuously optimizes our products. Webpage content may not reflect the latest updates. For inquiries, please contact info@arexbio.com or your local distributor.

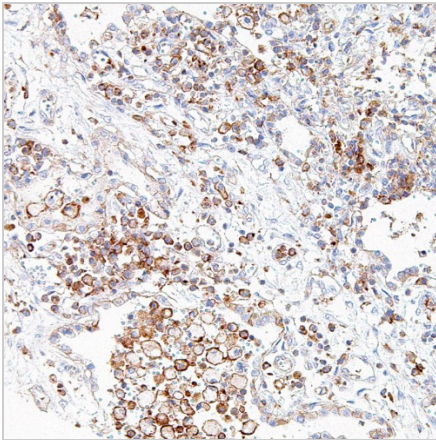
*Clone Number, Reactivity, Source/Host and Clonality can be found in the product name and Key Features section above.

DATASHEET**CMTM6 Mouse Monoclonal Antibody (ARM967)**

CAT. NO. ARM6757

STORAGE

Store at 4°C short term. For long term storage, store at -20°C, avoiding freeze/thaw cycles.

DATA

Immunohistochemical staining of human lung cancer tissue using CMTM6 Mouse Monoclonal Antibody (ARM967).

RESEARCH USE ONLY

For Research Use Only. Not for diagnostic, therapeutics, prophylactic or in vivo use.

More information: [www.arexbio.com / cmtm6-mouse-monoclonal-antibody-arm967-arm6757](http://www.arexbio.com/cmtm6-mouse-monoclonal-antibody-arm967-arm6757)