

**DATASHEET**

**CTLA-4 Rabbit Monoclonal Antibody (ARM971)**

CAT. NO. ARM6761

**KEY FEATURES**

Target	CTLA-4	Clone ID	ARM971
Source / Host	Rabbit	Reactivity	Human
Applications	IHC	Dilution	1:100-1:200
Clonality	Monoclonal	Storage	-20°C

**BACKGROUND**

Cytotoxic T-Lymphocyte-Associated Protein 4 (CTLA-4) is a receptor on T helper cells that functions as an immune checkpoint and downregulator of immune responses. Mutations in CTLA-4 are associated with insulin-dependent diabetes mellitus, Hashimoto's thyroiditis, Graves' disease, systemic lupus erythematosus (SLE), celiac disease, primary biliary cirrhosis, thyroid-associated orbitopathy, multiple sclerosis, and other autoimmune diseases. The spliced variant of CTLA-4 in SLE is present in the patient's serum. Haploinsufficiency of CTLA-4 causes the immune system disorder known as CTLA-4 deficiency or CHAI disease (CTLA-4 haploinsufficiency with autoimmune infiltration).

**APPLICATION**

To ensure optimal assay performance, AREX recommends conducting reagent titration tailored to each testing system for optimal detection results.

Application	IHC
Dilution Ratio	1:100-1:200

\*Results are sample-specific. Please refer to your local assay conditions and test parameters for reference.

**PRODUCT OVERVIEW**

Antibody Type	Primary antibodies
Isotype	IgG
Positive Control	Tonsil
Localization	Membranous, Cytoplasmic
Form / Buffer	Tris Buffer, pH 7.3 - 7.7, with 1% BSA and <0.1% Sodium Azide
Purification	Purified
Conjugation	Unconjugated
Gene Symbol	CTLA4
Entrez Gene ID	1493
Uniprot	P16410
Alternative Names	Cytotoxic T-lymphocyte-associated protein 4, CD152

\*AREX continuously optimizes our products. Webpage content may not reflect the latest updates. For inquiries, please contact [info@arexbio.com](mailto:info@arexbio.com) or your local distributor.

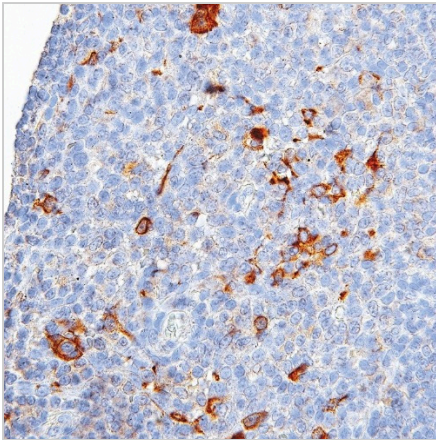
\*Clone Number, Reactivity, Source/Host and Clonality can be found in the product name and Key Features section above.

**DATASHEET****CTLA-4 Rabbit Monoclonal Antibody (ARM971)**

CAT. NO. ARM6761

**STORAGE**

Store at 4°C short term. For long term storage, store at -20°C, avoiding freeze/thaw cycles.

**DATA**

Immunohistochemical staining of human tonsil tissue using CTLA-4 Rabbit Monoclonal Antibody (ARM971).

**RESEARCH USE ONLY**

For Research Use Only. Not for diagnostic, therapeutics, prophylactic or in vivo use.

More information: [www.arexbio.com / ctla-4-mouse-monoclonal-antibody-arm971-arm6761](http://www.arexbio.com/ctla-4-mouse-monoclonal-antibody-arm971-arm6761)