

DATASHEET

Cyclin D1 Rabbit Monoclonal Antibody (ARM972)

CAT. NO. ARM6762

KEY FEATURES

Target	Cyclin D1	Clone ID	ARM972
Source / Host	Rabbit	Reactivity	Human
Applications	IHC	Dilution	1:100-1:200
Clonality	Monoclonal	Storage	-20°C

BACKGROUND

Cyclin D1 is an essential cell cycle regulator and proto-oncogene. Cyclin D1 staining is useful for investigating cell cycle biology and related cancers. Anti-Cyclin D1 is used for differentiating mantle cell lymphomas (positive stain) from CLL/SLL and follicular lymphomas (negative stain). Hairy cell leukemia and plasma cell myeloma also react lightly to Anti-Cyclin D1.

APPLICATION

To ensure optimal assay performance, AREX recommends conducting reagent titration tailored to each testing system for optimal detection results.

Application	IHC
Dilution Ratio	1:100-1:200

*Results are sample-specific. Please refer to your local assay conditions and test parameters for reference.

PRODUCT OVERVIEW

Antibody Type	Primary antibodies
Isotype	IgG
Positive Control	Mantle Cell Lymphoma
Localization	Nuclear
Form / Buffer	Tris Buffer, pH 7.3 - 7.7, with 1% BSA and <0.1% Sodium Azide
Purification	Purified
Conjugation	Unconjugated
Gene Symbol	CCND1
Entrez Gene ID	595
Uniprot	P24385
Alternative Names	BCL1; PRAD1; G1/S-specific cyclin-D1; B-cell lymphoma 1 protein; BCL-1; BCL-1 oncogene; PRAD1 oncogene

*AREX continuously optimizes our products. Webpage content may not reflect the latest updates. For inquiries, please contact info@arexbio.com or your local distributor.

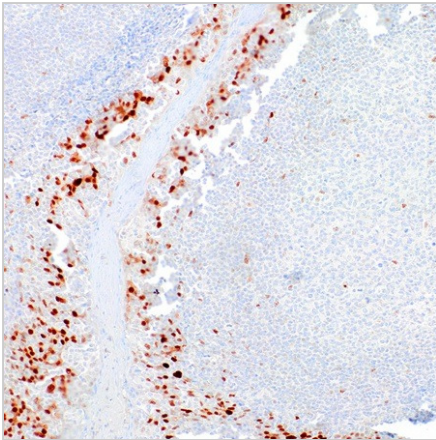
*Clone Number, Reactivity, Source/Host and Clonality can be found in the product name and Key Features section above.

DATASHEET**Cyclin D1 Rabbit Monoclonal Antibody (ARM972)**

CAT. NO. ARM6762

STORAGE

Store at 4°C short term. For long term storage, store at -20°C, avoiding freeze/thaw cycles.

DATA

Immunohistochemical staining of human tonsil tissue using Cyclin D1 Rabbit Monoclonal Antibody (ARM972).

RESEARCH USE ONLY

For Research Use Only. Not for diagnostic, therapeutics, prophylactic or in vivo use.

More information: [www.arexbio.com / cyclin-d1-mouse-monoclonal-antibody-arm972-arm6762](http://www.arexbio.com/cyclin-d1-mouse-monoclonal-antibody-arm972-arm6762)