

DATASHEET

Cytokeratin 20 Rabbit Monoclonal Antibody (ARM977)

CAT. NO. ARM6767

KEY FEATURES

Target	Cytokeratin 20	Clone ID	ARM977
Source / Host	Rabbit	Reactivity	Human
Applications	IHC	Dilution	1:100-1:200
Clonality	Monoclonal	Storage	-20°C

BACKGROUND

Cytokeratin 20 (CK20) forms intermediate filaments and is normally present in gastric and intestinal epithelium, urothelium, and Merkel cells. Anti-Cytokeratin 20 is used for distinguishing specific types of urinary tract epithelial cells and malignant epithelia. Anti-Cytokeratin 20 stains tissues of the colon, stomach, pancreas, biliary system adenocarcinomas, transitional-cell, mucinous ovarian tumours, and Merkel cell carcinomas. Non-mucinous tumours of the ovary and adenocarcinomas of the breast, lung, endometrium, squamous cell, and small cell type are not stained by Anti-Cytokeratin 20.

APPLICATION

To ensure optimal assay performance, AREX recommends conducting reagent titration tailored to each testing system for optimal detection results.

Application	IHC
Dilution Ratio	1:100-1:200

*Results are sample-specific. Please refer to your local assay conditions and test parameters for reference.

PRODUCT OVERVIEW

Antibody Type	Primary antibodies
Isotype	IgG
Positive Control	Breast Cancer
Localization	Cytoplasmic
Form / Buffer	Tris Buffer, pH 7.3 - 7.7, with 1% BSA and <0.1% Sodium Azide
Purification	Purified
Conjugation	Unconjugated
Gene Symbol	KRT20
Entrez Gene ID	54474
Uniprot	P35900
Alternative Names	Keratin, type I cytoskeletal 20; Cytokeratin-20; CK-20; Keratin-20; K20; Protein IT

*AREX continuously optimizes our products. Webpage content may not reflect the latest updates. For inquiries, please contact info@arexbio.com or your local distributor.

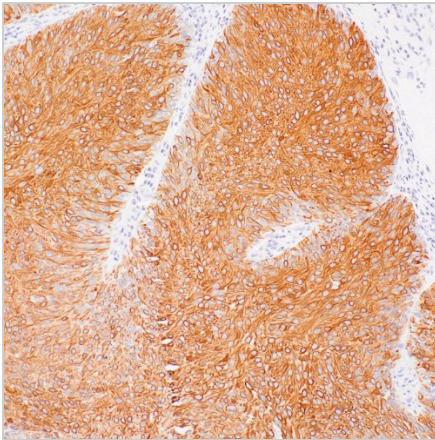
*Clone Number, Reactivity, Source/Host and Clonality can be found in the product name and Key Features section above.

DATASHEET**Cytokeratin 20 Rabbit Monoclonal Antibody (ARM977)**

CAT. NO. ARM6767

STORAGE

Store at 4°C short term. For long term storage, store at -20°C, avoiding freeze/thaw cycles.

DATA

Immunohistochemical staining of human colon tissue using Cytokeratin 20 Rabbit Monoclonal Antibody (ARM977).

RESEARCH USE ONLY

For Research Use Only. Not for diagnostic, therapeutics, prophylactic or in vivo use.

More information: [www.arexbio.com / cytokeratin-20-mouse-monoclonal-antibody-arm977-arm6767](http://www.arexbio.com/cytokeratin-20-mouse-monoclonal-antibody-arm977-arm6767)